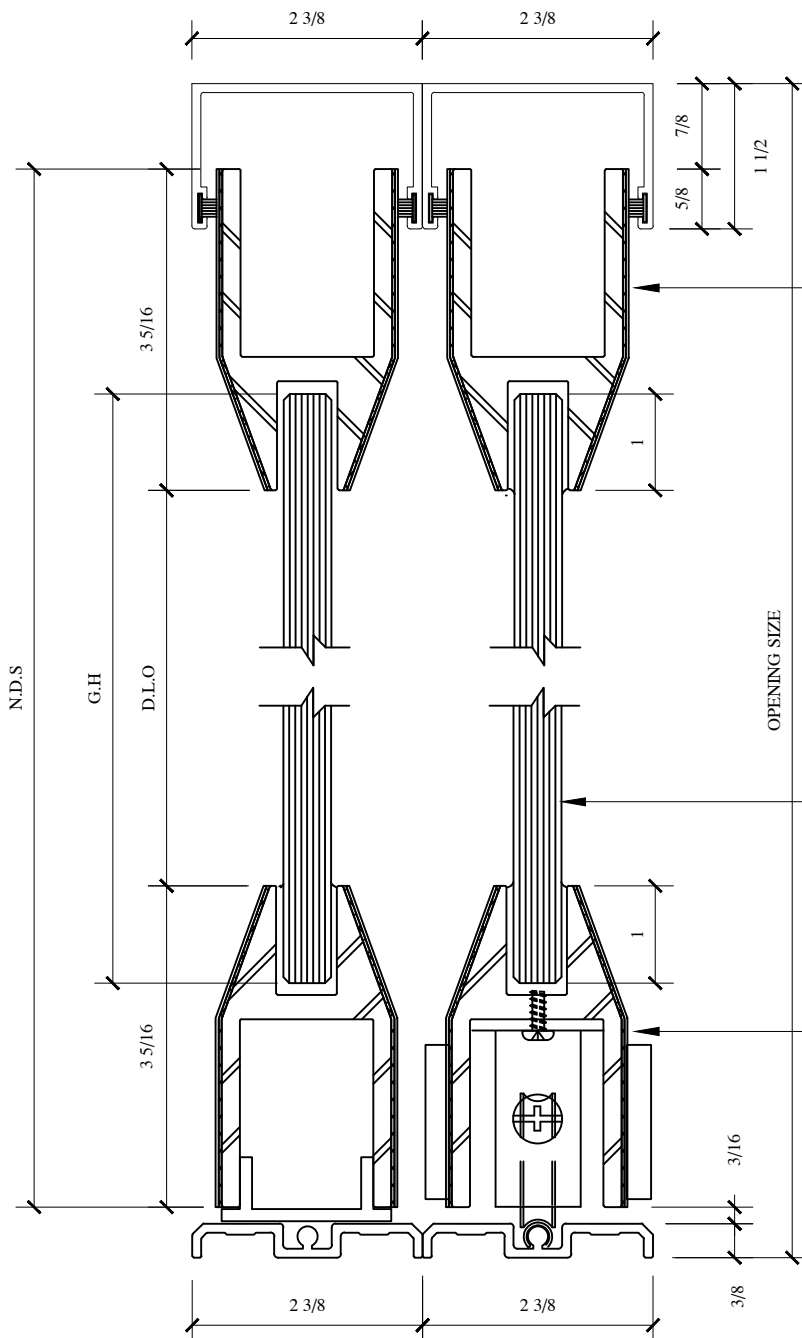


* FINISHES AVAILABLE :
8 POLISHED & # 4 SATIN STAINLESS
US3 POLISHED & US4 SATIN BRASS (NON LACQUER COATED)
US10B
ANODIZED PAINTED



PL150 CLAD
BY P.R.L GLASS

GLASS HEIGHT = D.L.O + 2"

1/2" CLEAR TEMPERED
GLASS
BY P.R.L GLASS

PL 150 CLAD
BY P.R.L GLASS

PRL

GLASS
SYSTEMS
INC.
Prlglass.com

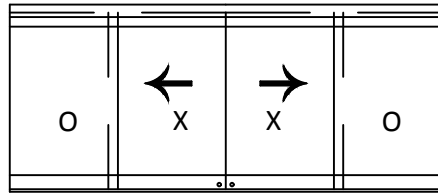


PL350

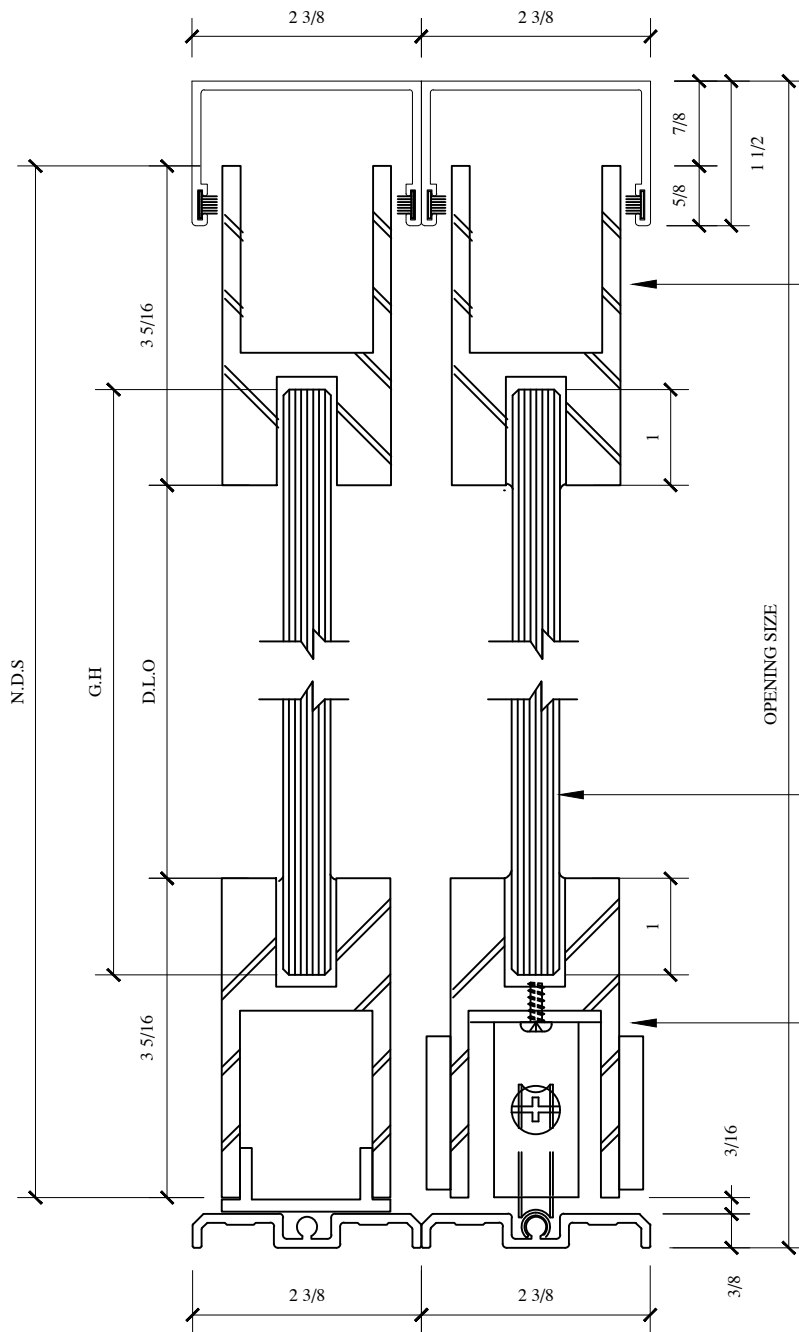
BTM ROLL SYSTEM (O,X,X,O)

DWG NO.: BOTTOM ROLLING SLIDER

DATE: 05/22/10



* FINISHES AVAILABLE :
8 POLISHED & # 4 SATIN
STAINLESS
US3 POLISHED & US4 SATIN
BRASS (NON LACQUER
COATED)
US10B
ANODIZED PAINTED



PL 350
BY P.R.L GLASS

GLASS HEIGHT = D.L.O + 2"

1/2" CLEAR TEMPERED
GLASS
BY P.R.L GLASS

PL 350
BY P.R.L GLASS

PRL

GLASS
SYSTEMS
INC.

Prlglass.com

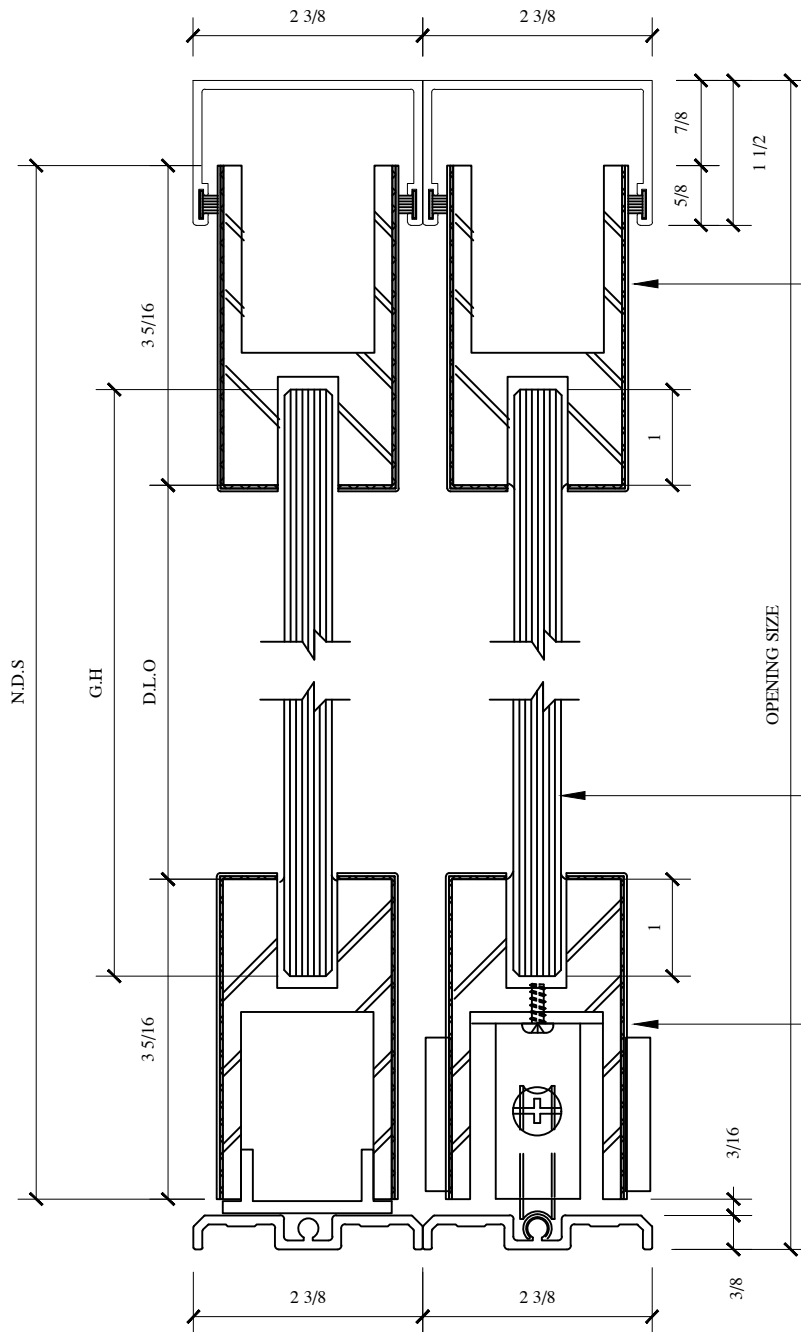
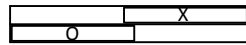
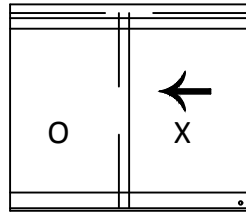


PL350 CLAD BTM ROLL SYSTEM (O,X)

DWG NO.: BOTTOM ROLLING SLIDER

DATE: 05/22/10

* FINISHES AVAILABLE :
8 POLISHED & # 4 SATIN
STAINLESS
US3 POLISHED & US4 SATIN
BRASS (NON LACQUER
COATED)
US10B
ANODIZED PAINTED



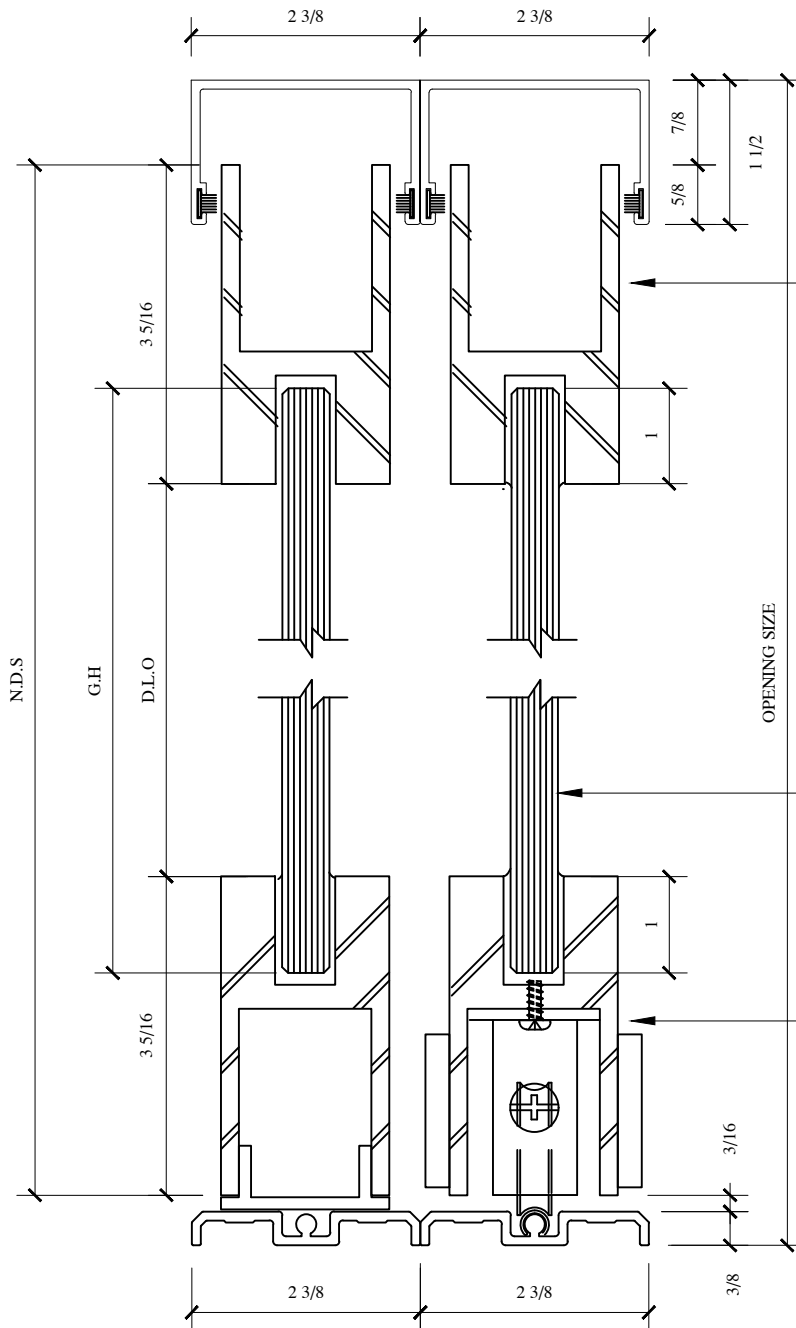
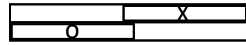
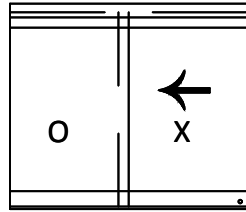
PL 350 CLAD
BY P.R.L GLASS

GLASS HEIGHT = D.L.O + 2"

1/2" CLEAR TEMPERED
GLASS
BY P.R.L GLASS

PL 350 CLAD
BY P.R.L GLASS

* FINISHES AVAILABLE :
8 POLISHED & # 4 SATIN STAINLESS
US3 POLISHED & US4 SATIN BRASS (NON LACQUER COATED)
US10B
ANODIZED PAINTED



PL 350
BY P.R.L GLASS

GLASS HEIGHT = D.L.O + 2"

1/2" CLEAR TEMPERED
GLASS
BY P.R.L GLASS

PL 350
BY P.R.L GLASS

PRL

GLASS
SYSTEMS
INC.

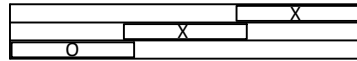
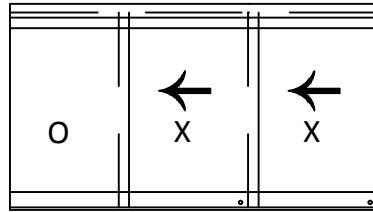
Prlglass.com



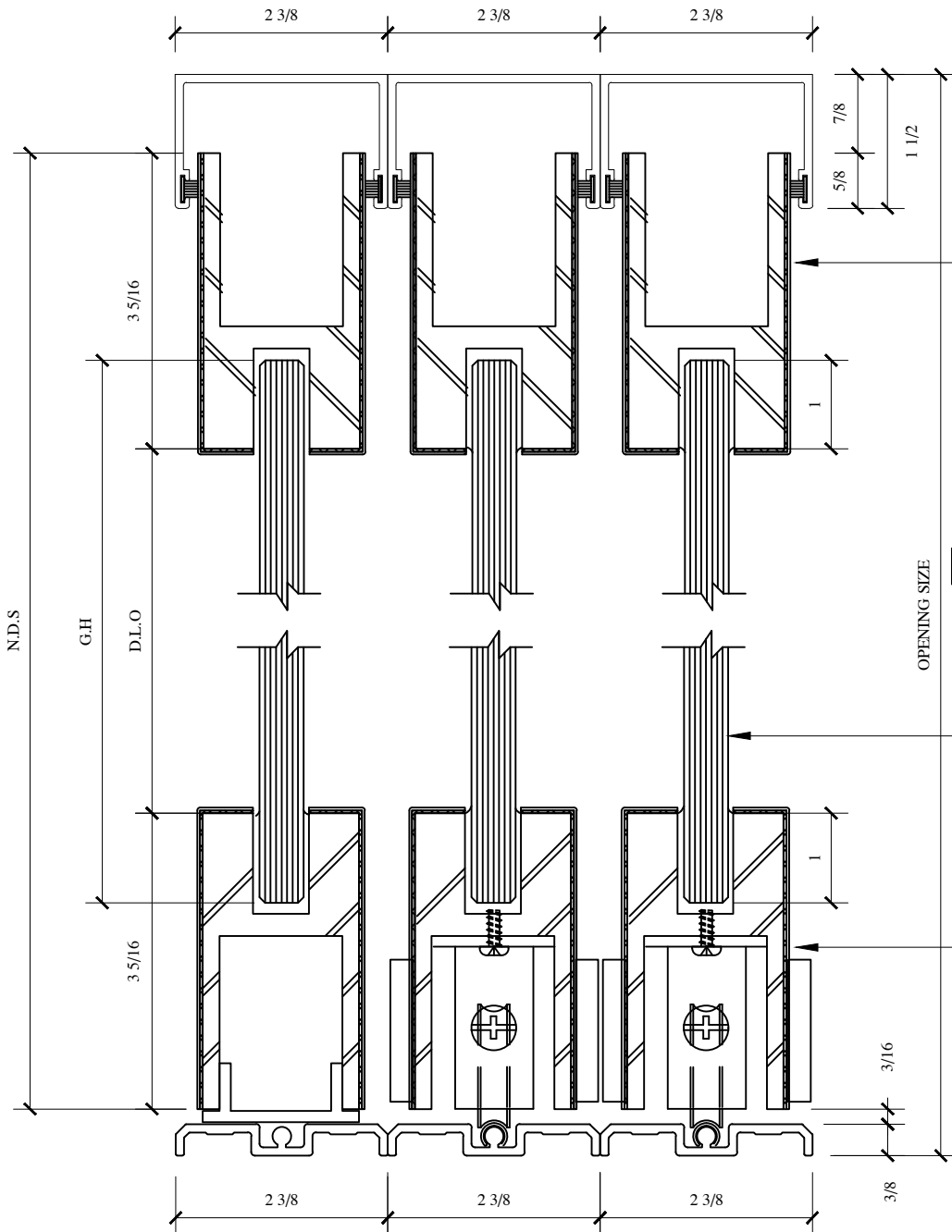
PL350 CLAD BTM ROLL SYSTEM (O,X,X)

DWG NO.: BOTTOM ROLLING SLIDER

DATE: 05/22/10



* FINISHES AVAILABLE :
8 POLISHED & # 4 SATIN
STAINLESS
US3 POLISHED & US4 SATIN
BRASS (NON LACQUER
COATED)
US10B
ANODIZED PAINTED



PL 350 CLAD
BY P.R.L GLASS

GLASS HEIGHT = D.L.O + 2"

1/2" CLEAR TEMPERED
GLASS
BY P.R.L GLASS

PL 350 CLAD
BY P.R.L GLASS

PRL

GLASS
SYSTEMS
INC.

Prlglass.com

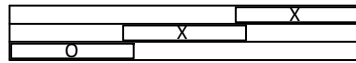
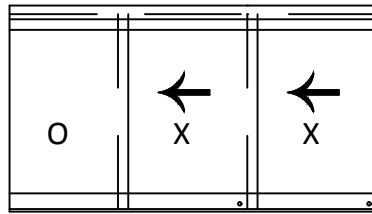


PL350

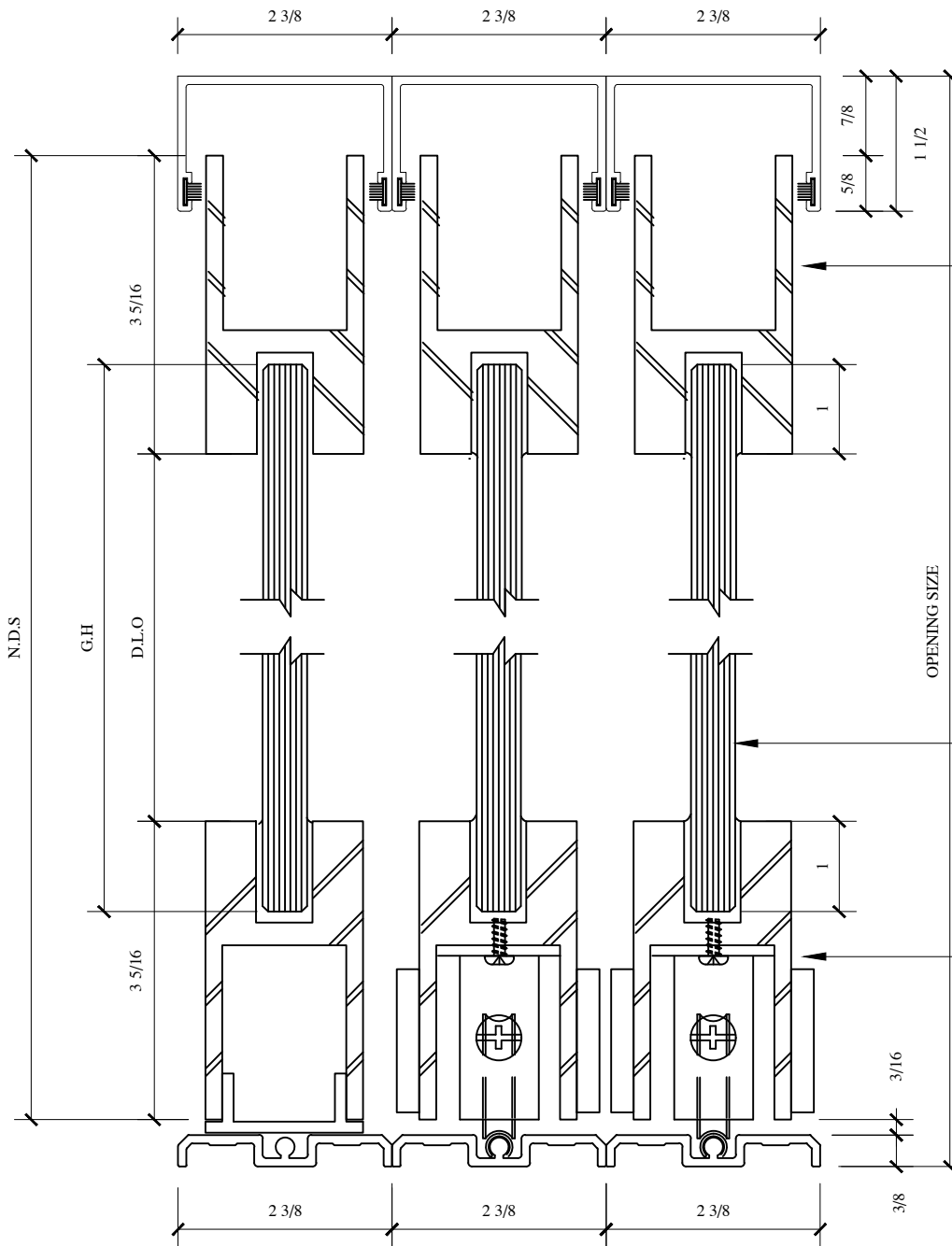
BTM ROLL SYSTEM (O,X,X)

DWG NO.: BOTTOM ROLLING SLIDER

DATE: 05/22/10



* FINISHES AVAILABLE :
8 POLISHED & # 4 SATIN
STAINLESS
US3 POLISHED & US4 SATIN
BRASS (NON LACQUER
COATED)
US10B
ANODIZED PAINTED



PL 350
BY P.R.L GLASS

GLASS HEIGHT = D.L.O + 2"

1/2" CLEAR TEMPERED
GLASS
BY P.R.L GLASS

PL 350
BY P.R.L GLASS

PRL

GLASS
SYSTEMS
INC.

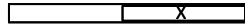
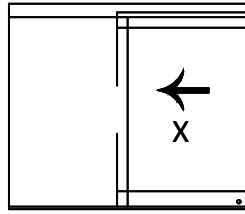
Prlglass.com



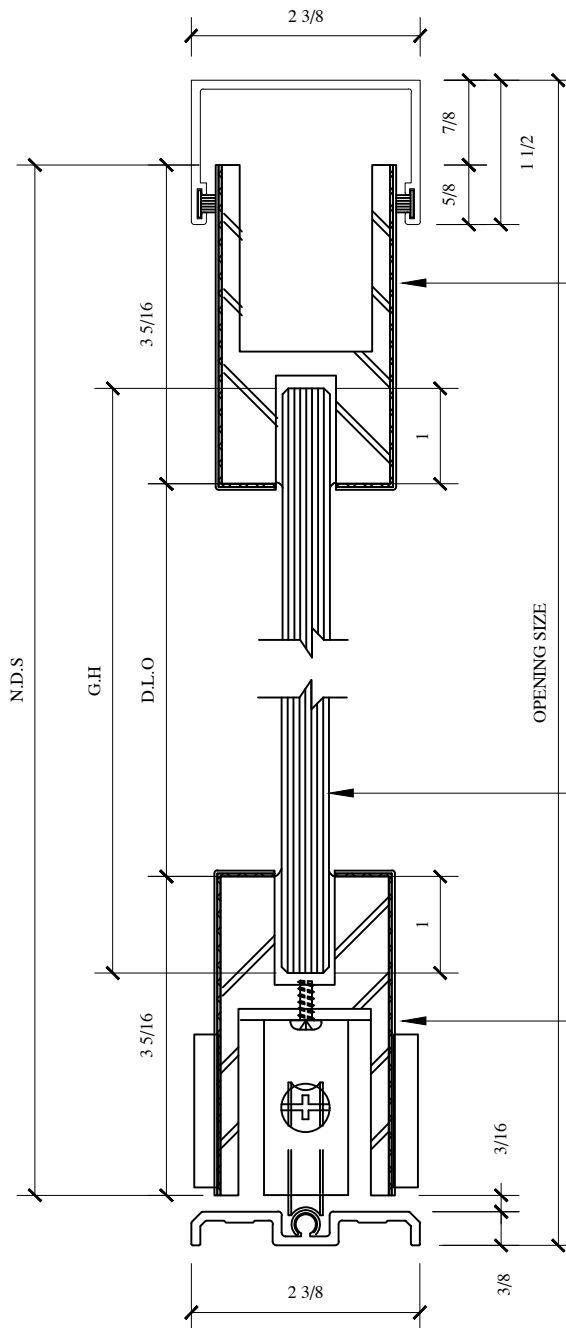
PL350 CLAD BTM ROLL SYSTEM (X)

DWG NO.: BOTTOM ROLLING SLIDER

DATE: 05/22/10



* FINISHES AVAILABLE :
8 POLISHED & # 4 SATIN
STAINLESS
US3 POLISHED & US4 SATIN
BRASS (NON LACQUER
COATED)
US10B
ANODIZED PAINTED

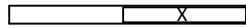
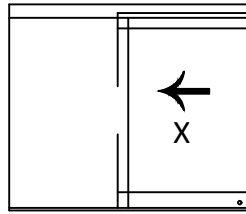


PL 350 CLAD
BY P.R.L GLASS

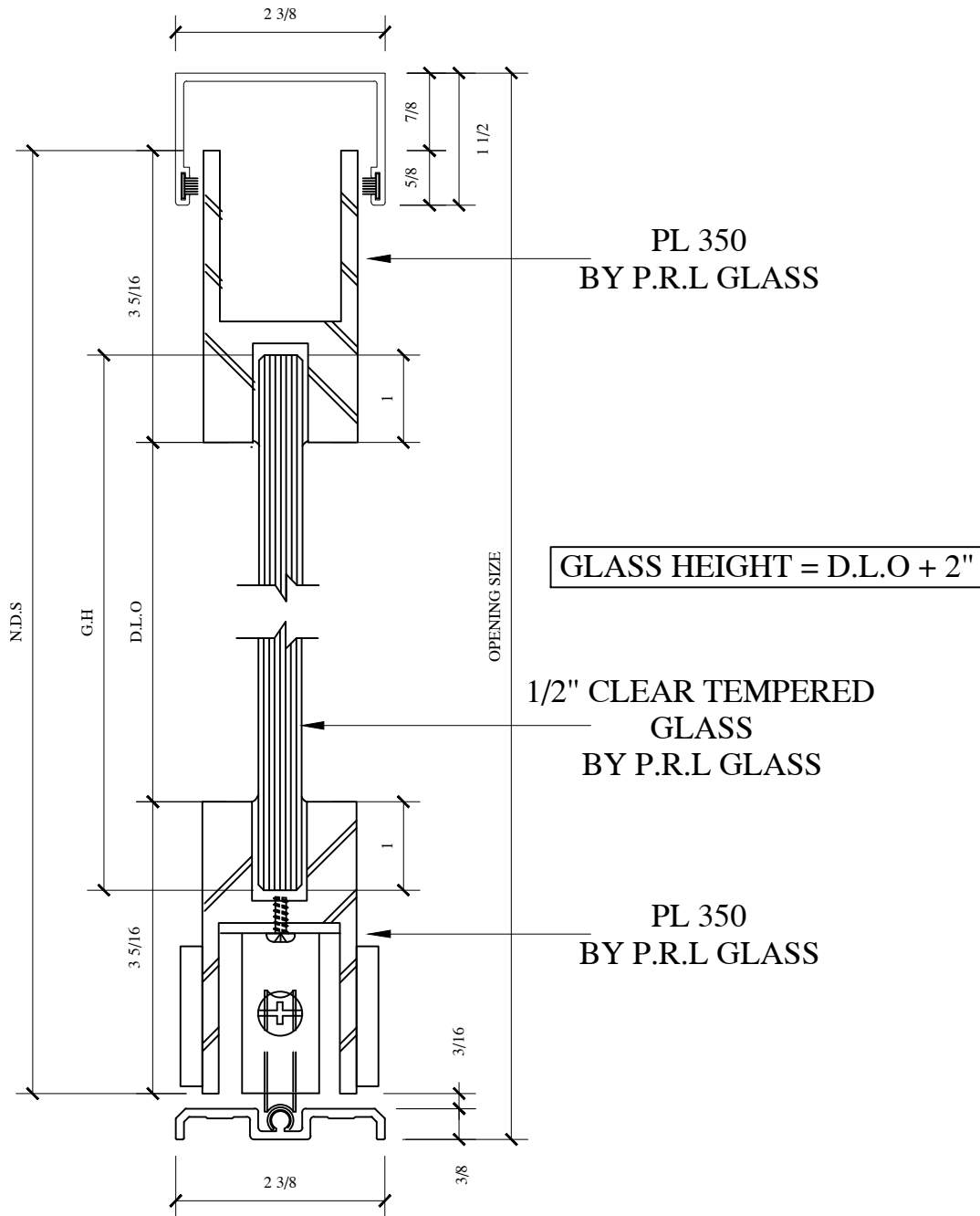
GLASS HEIGHT = D.L.O + 2"

1/2" CLEAR TEMPERED
GLASS
BY P.R.L GLASS

PL 350 CLAD
BY P.R.L GLASS



* FINISHES AVAILABLE :
8 POLISHED & # 4 SATIN
STAINLESS
US3 POLISHED & US4 SATIN
BRASS (NON LACQUER
COATED)
US10B
ANODIZED PAINTED



PRL

GLASS
SYSTEMS
INC.

Prlglass.com



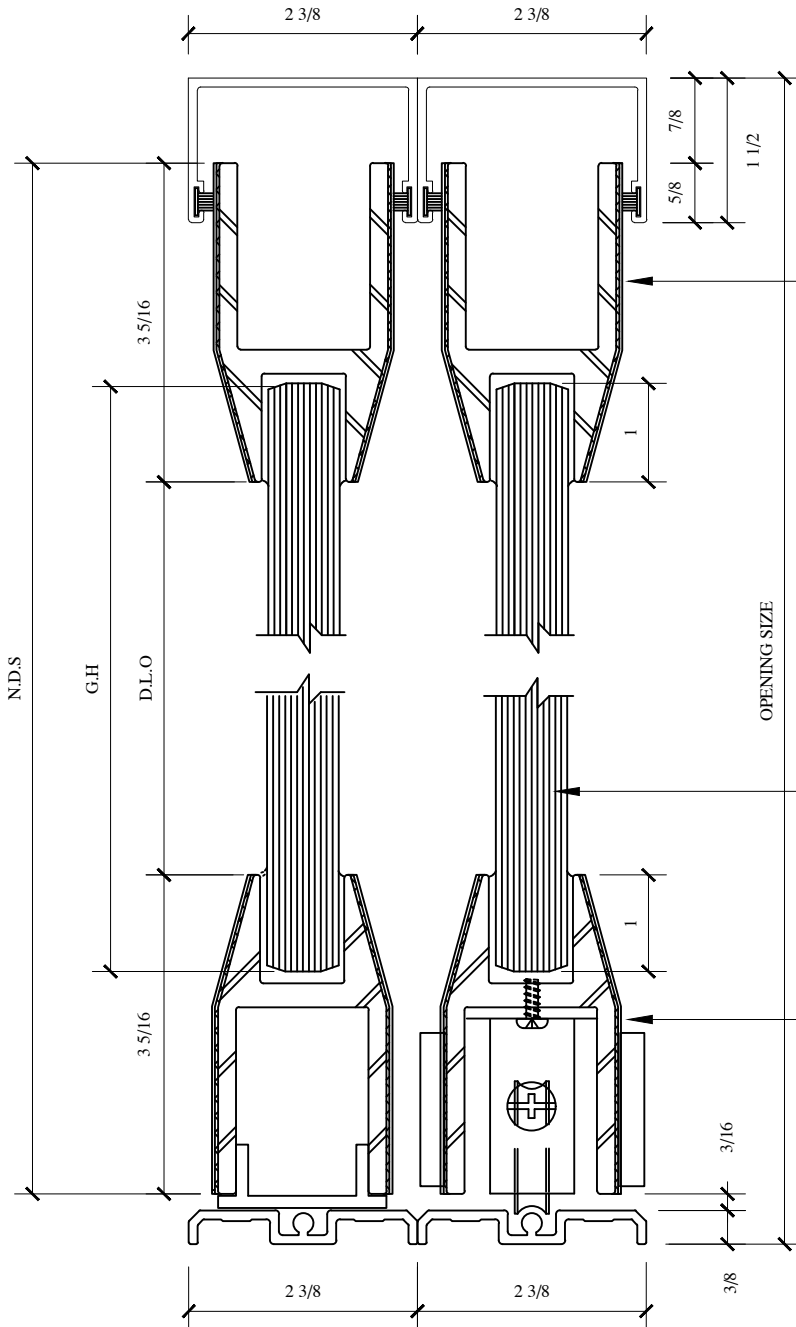
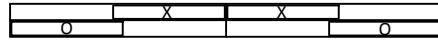
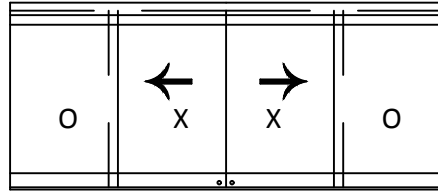
PL175 CLAD

BTM ROLL SYSTEM (O,X,X,O)

DWG NO.: BOTTOM ROLLING SLIDER

DATE: 05/22/10

* FINISHES AVAILABLE :
8 POLISHED & # 4 SATIN
STAINLESS
US3 POLISHED & US4 SATIN
BRASS (NON LACQUER
COATED)
US10B
ANODIZED PAINTED



PL 175 CLAD
BY P.R.L GLASS

GLASS HEIGHT = D.L.O + 2"

3/4" CLEAR TEMPERED
GLASS
BY P.R.L GLASS

PL 175 CLAD
BY P.R.L GLASS

PRL

GLASS
SYSTEMS
INC.

Prlglass.com



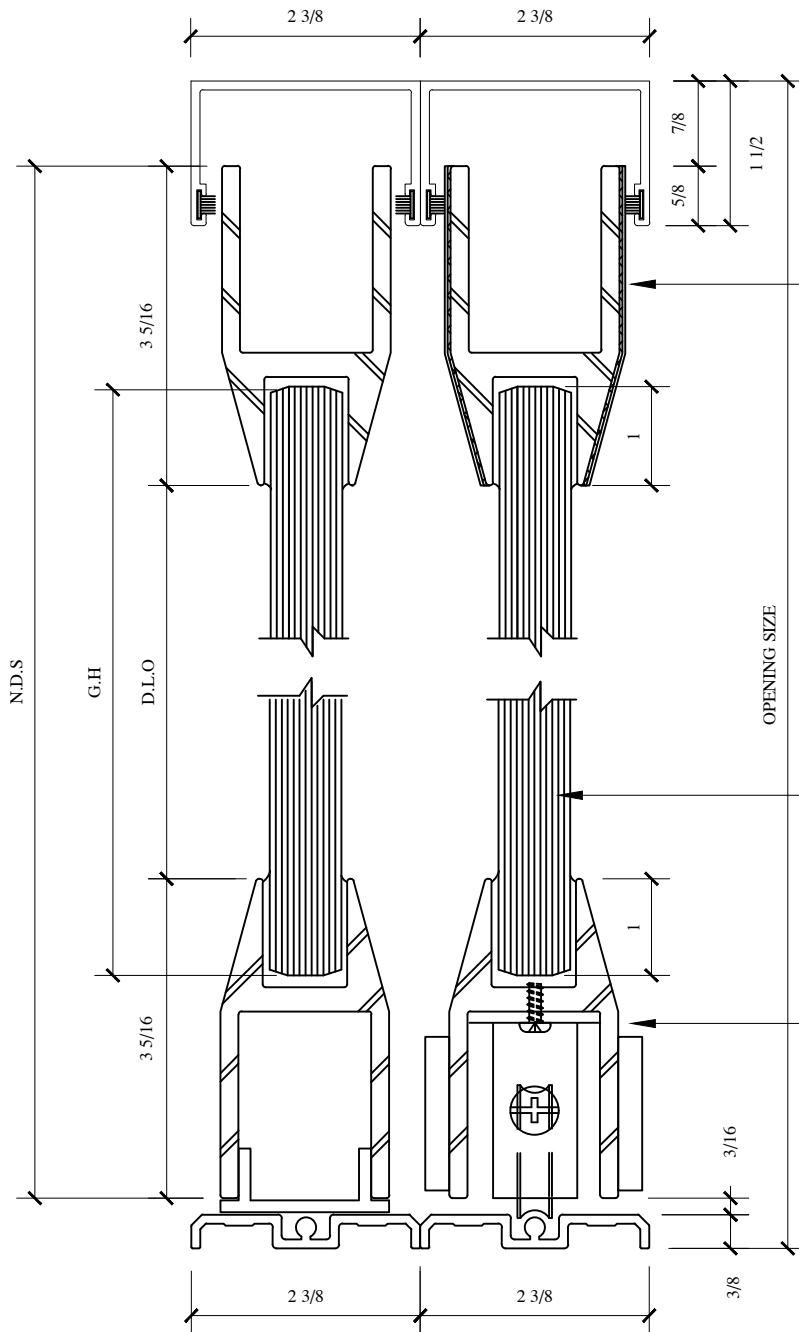
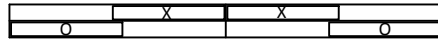
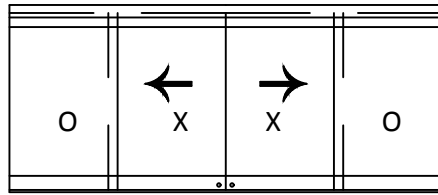
PL 175

BTM ROLL SYSTEM (O,X,X,O)

DWG NO.: BOTTOM ROLLING SLIDER

DATE: 05/22/10

* FINISHES AVAILABLE :
8 POLISHED & # 4 SATIN
STAINLESS
US3 POLISHED & US4 SATIN
BRASS (NON LACQUER
COATED)
US10B
ANODIZED PAINTED



PL 175
BY P.R.L GLASS

GLASS HEIGHT = D.L.O + 2"

3/4" CLEAR TEMPERED
GLASS
BY P.R.L GLASS

PL 175
BY P.R.L GLASS

PRL

GLASS
SYSTEMS
INC.

Prlglass.com



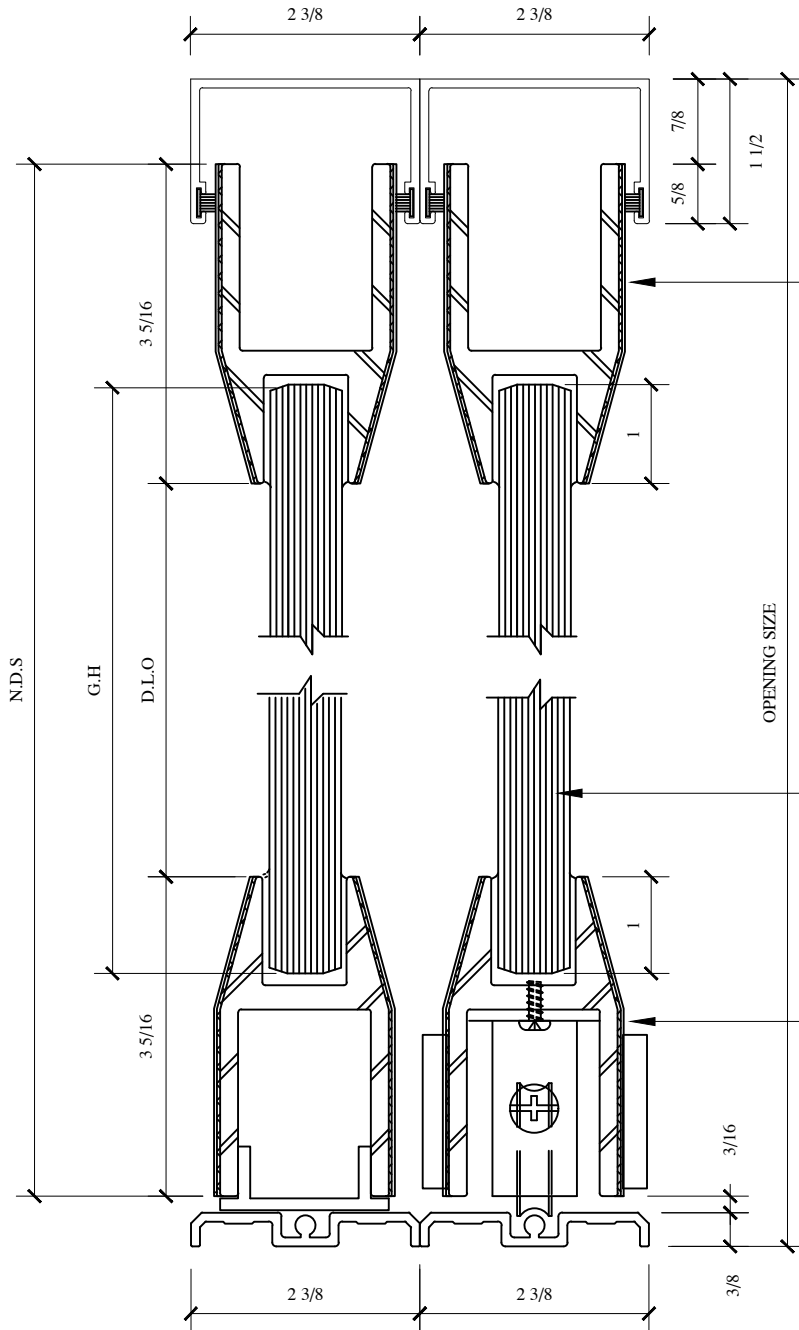
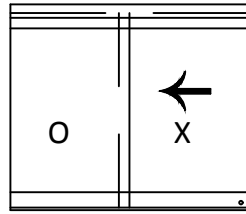
PL175 CLAD BTM ROLL SYSTEM (O,X)

DWG NO.: BOTTOM ROLLING SLIDER

DATE: 05/22/10

* FINISHES AVAILABLE :

- # 8 POLISHED & # 4 SATIN STAINLESS
- US3 POLISHED & US4 SATIN BRASS (NON LACQUER COATED)
- US10B
- ANODIZED PAINTED



PL 175 CLAD
BY P.R.L GLASS

GLASS HEIGHT = D.L.O + 2"

3/4" CLEAR TEMPERED
GLASS
BY P.R.L GLASS

PL 175 CLAD
BY P.R.L GLASS

PRL

GLASS
SYSTEMS
INC.
Prlglass.com



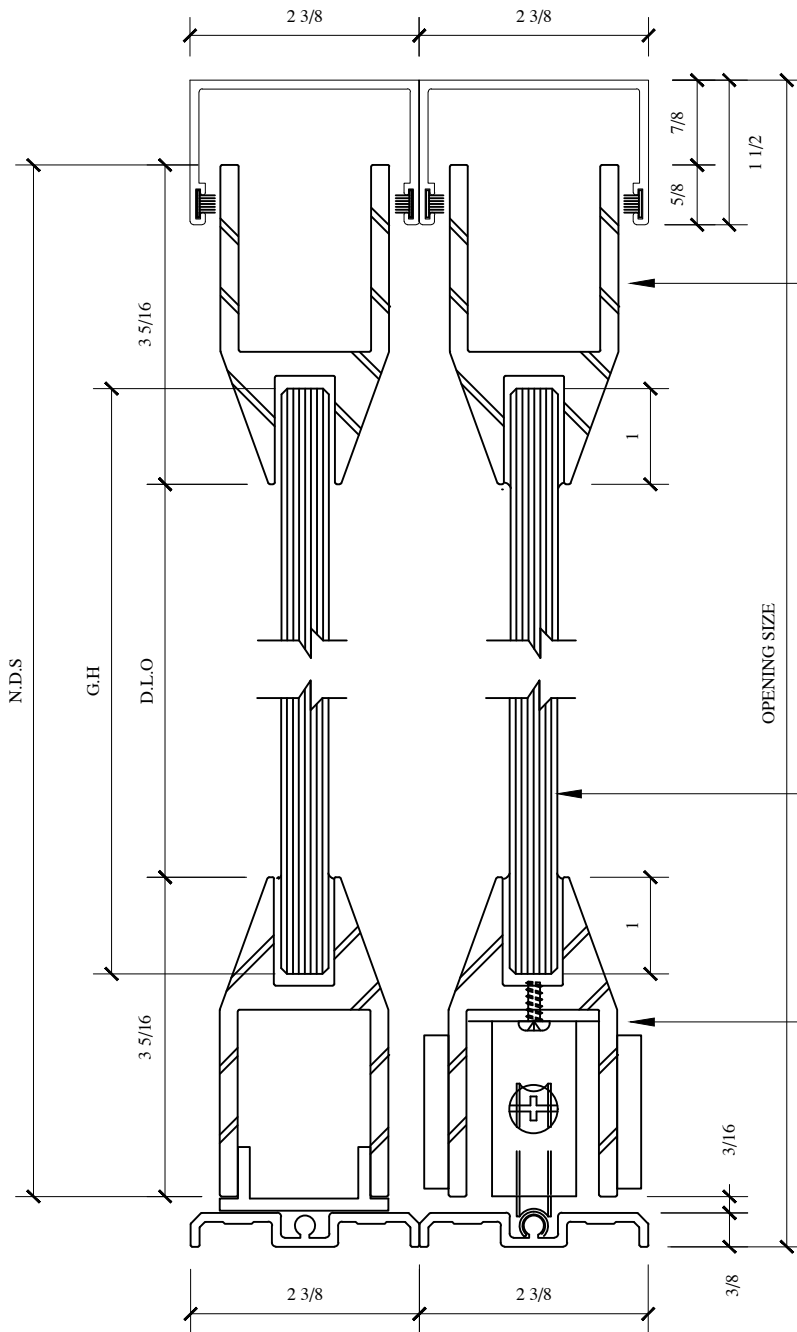
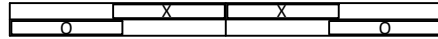
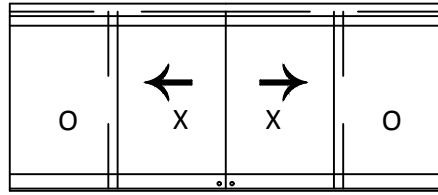
PL 150

BTM ROLL SYSTEM (O,X,X,O)

DWG NO.: BOTTOM ROLLING SLIDER

DATE: 05/22/10

* FINISHES AVAILABLE :
8 POLISHED & # 4 SATIN
STAINLESS
US3 POLISHED & US4 SATIN
BRASS (NON LACQUER
COATED)
US10B
ANODIZED PAINTED



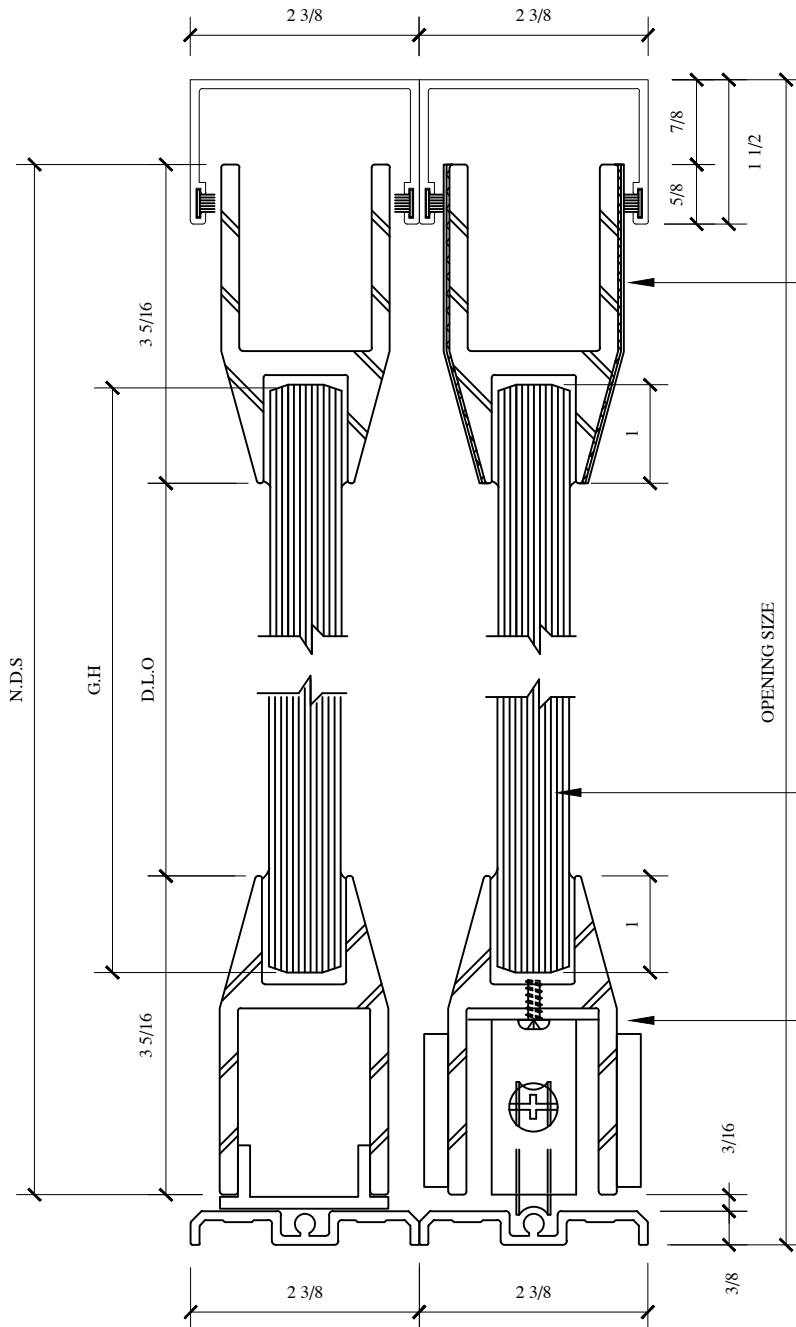
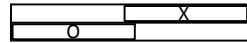
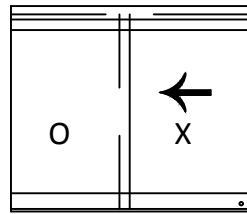
PL 150
BY P.R.L GLASS

GLASS HEIGHT = D.L.O + 2"

1/2" CLEAR TEMPERED
GLASS
BY P.R.L GLASS

PL 150
BY P.R.L GLASS

* FINISHES AVAILABLE :
8 POLISHED & # 4 SATIN
STAINLESS
US3 POLISHED & US4 SATIN
BRASS (NON LACQUER
COATED)
US10B
ANODIZED PAINTED



PL 175
BY P.R.L GLASS

GLASS HEIGHT = D.L.O + 2"

3/4" CLEAR TEMPERED
GLASS
BY P.R.L GLASS

PL 175
BY P.R.L GLASS

PRL

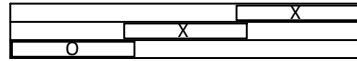
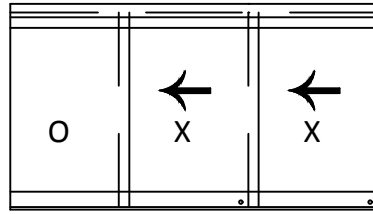
GLASS
SYSTEMS
INC.
PrIglass.com



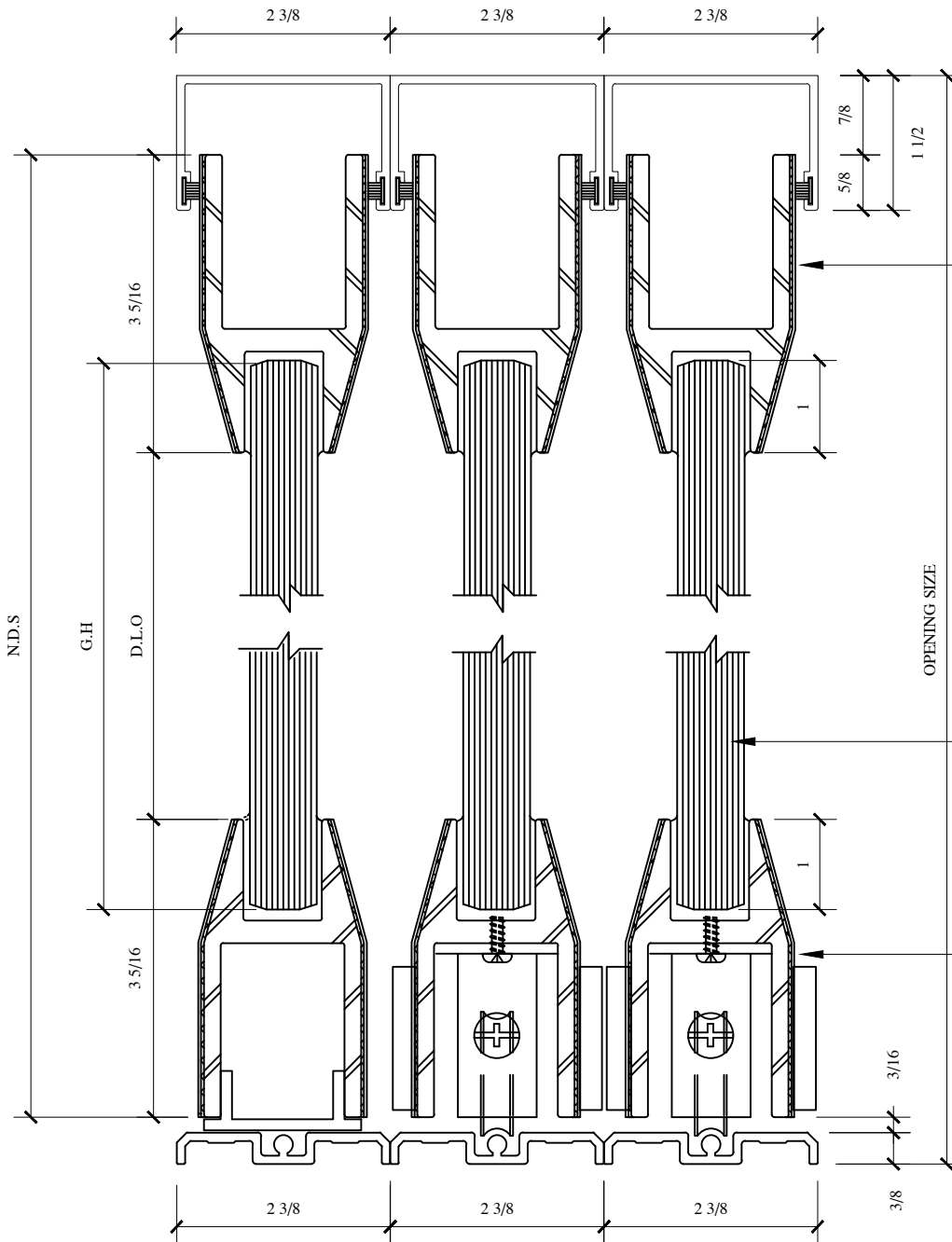
PL175 CLAD BTM ROLL SYSTEM (O,X,X)

DWG NO.: BOTTOM ROLLING SLIDER

DATE: 05/22/10



* FINISHES AVAILABLE :
8 POLISHED & # 4 SATIN
STAINLESS
US3 POLISHED & US4 SATIN
BRASS (NON LACQUER
COATED)
US10B
ANODIZED PAINTED

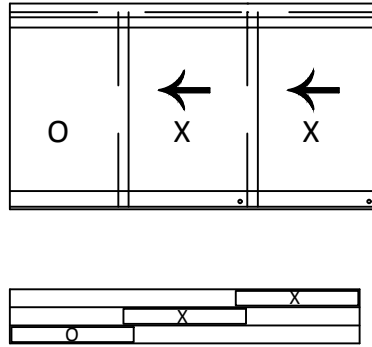


PL 175 CLAD
BY P.R.L GLASS

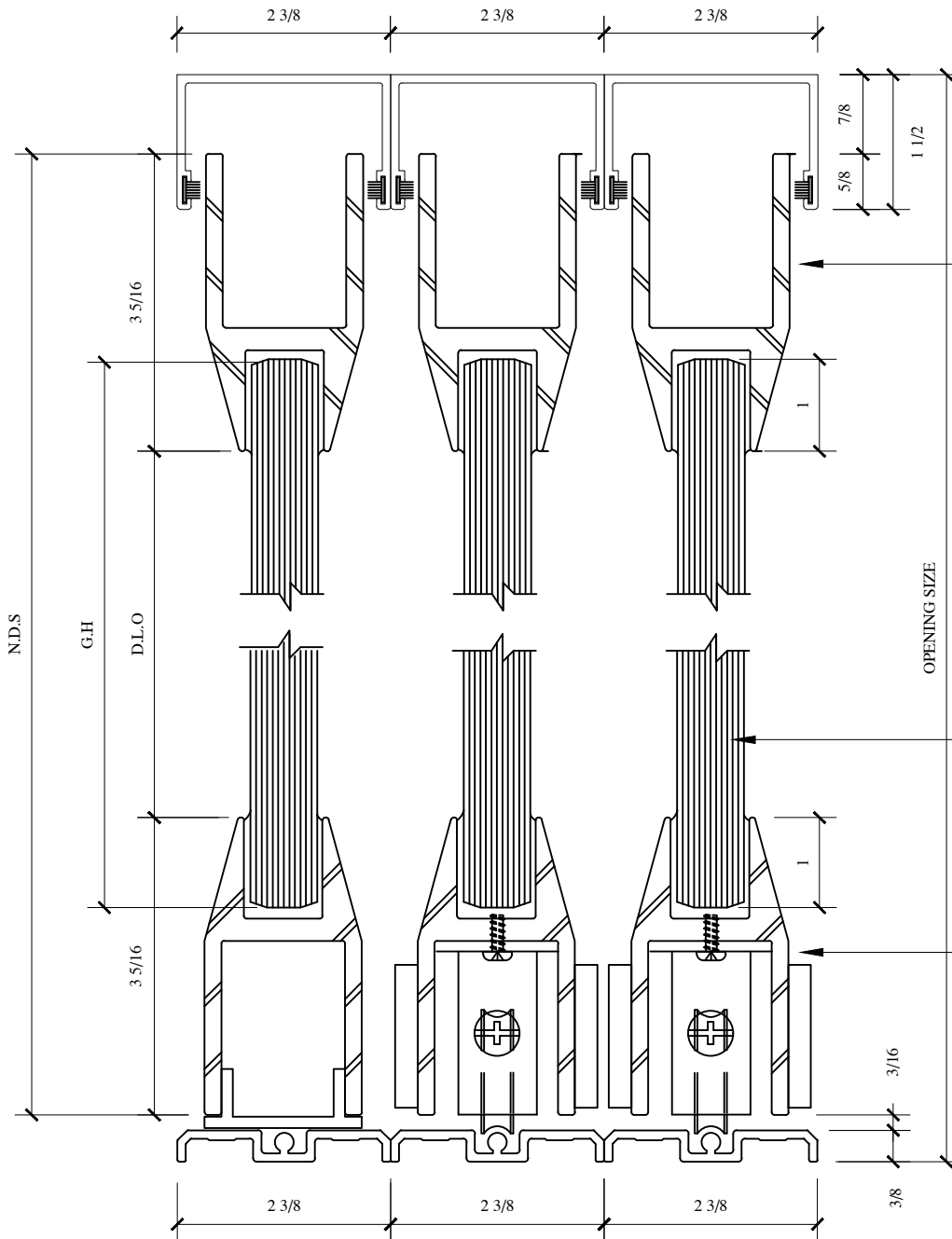
GLASS HEIGHT = D.L.O + 2"

3/4" CLEAR TEMPERED
GLASS
BY P.R.L GLASS

PL 175 CLAD
BY P.R.L GLASS



* FINISHES AVAILABLE :
8 POLISHED & # 4 SATIN STAINLESS
US3 POLISHED & US4 SATIN BRASS (NON LACQUER COATED)
US10B
ANODIZED PAINTED



PL 175
BY P.R.L GLASS

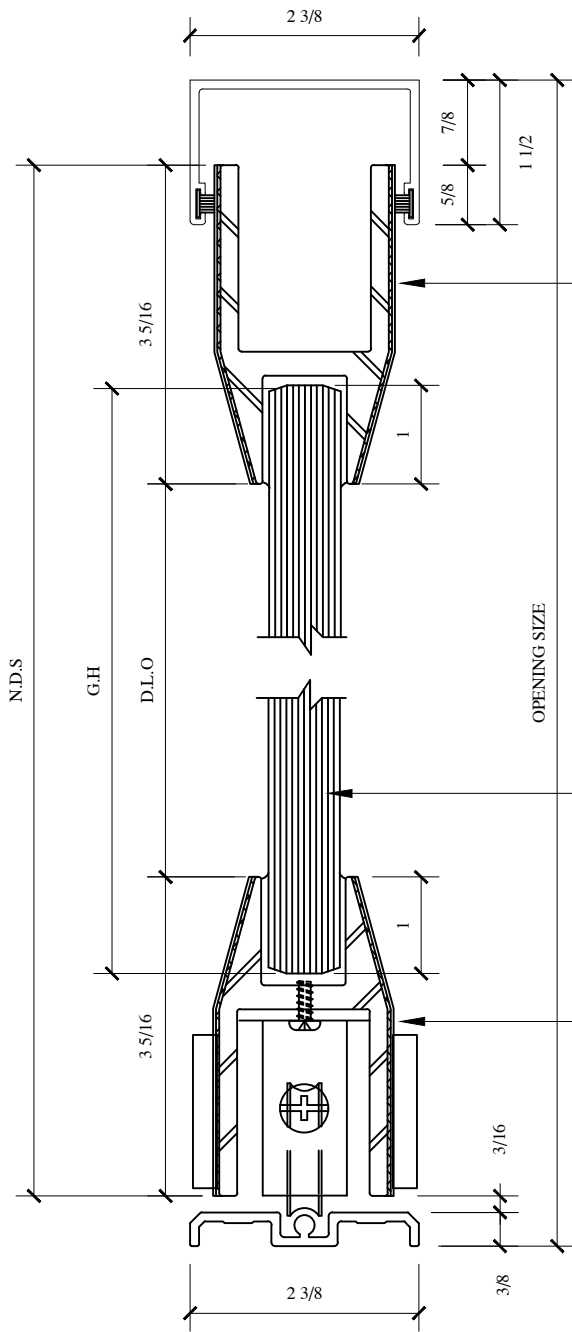
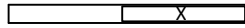
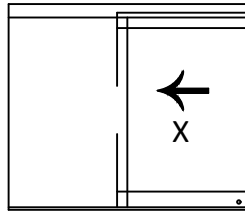
GLASS HEIGHT = D.L.O + 2"

3/4" CLEAR TEMPERED
GLASS
BY P.R.L GLASS

PL 175
BY P.R.L GLASS



* FINISHES AVAILABLE :
 # 8 POLISHED & # 4 SATIN
 STAINLESS
 US3 POLISHED & US4 SATIN
 BRASS (NON LACQUER
 COATED)
 US10B
 ANODIZED PAINTED



PL 175 CLAD
BY P.R.L GLASS

GLASS HEIGHT = D.L.O + 2"

3/4" CLEAR TEMPERED
GLASS
BY P.R.L GLASS

PL 175 CLAD
BY P.R.L GLASS

PRL

GLASS
SYSTEMS
INC.

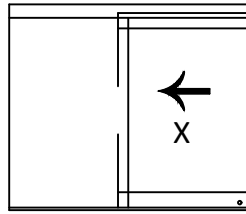
Prlglass.com



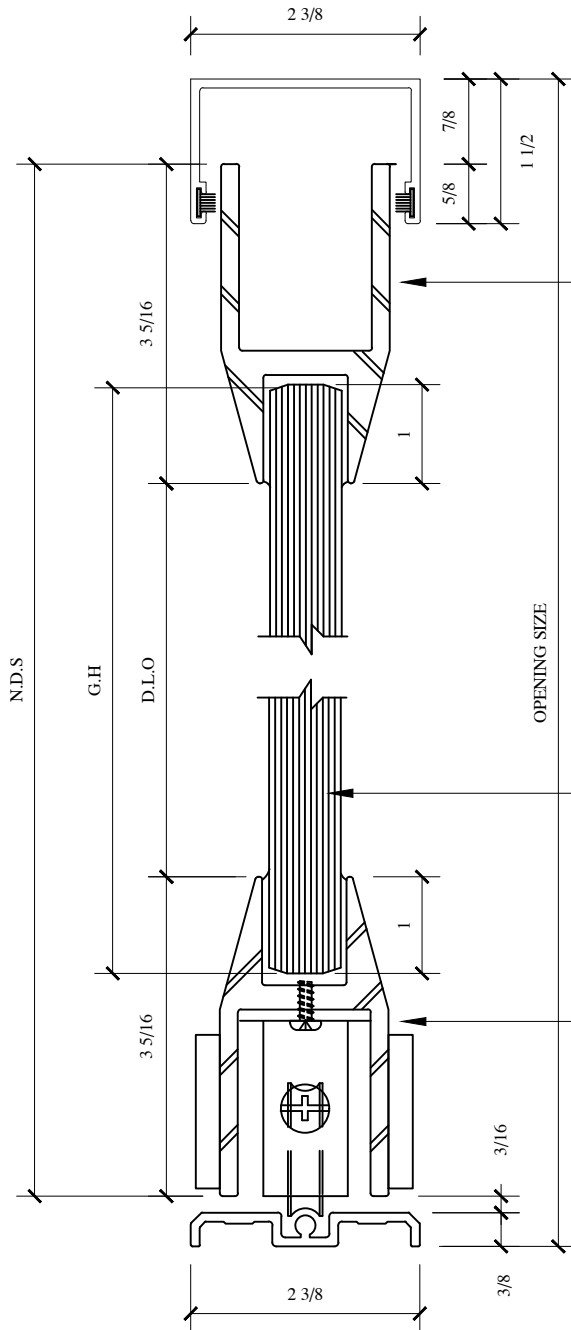
PL 175 BTM ROLL SYSTEM (X)

DWG NO.: BOTTOM ROLLING SLIDER

DATE: 05/22/10



* FINISHES AVAILABLE :
8 POLISHED & # 4 SATIN
STAINLESS
US3 POLISHED & US4 SATIN
BRASS (NON LACQUER
COATED)
US10B
ANODIZED PAINTED



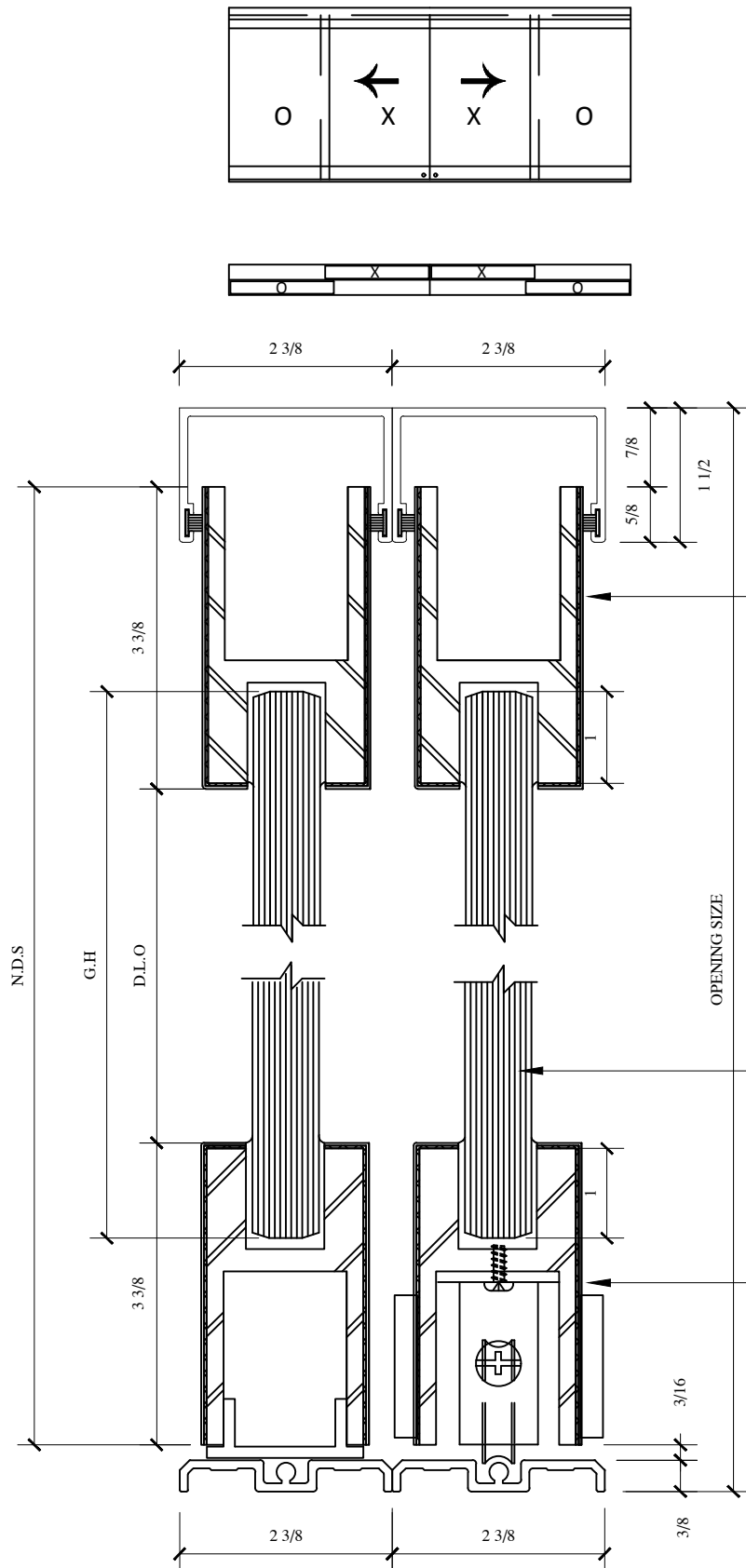
PL 175
BY P.R.L GLASS

GLASS HEIGHT = D.L.O + 2"

3/4" CLEAR TEMPERED
GLASS
BY P.R.L GLASS

PL 175
BY P.R.L GLASS

* FINISHES AVAILABLE :
8 POLISHED & # 4 SATIN STAINLESS
US3 POLISHED & US4 SATIN BRASS (NON LACQUER COATED)
US10B
ANODIZED PAINTED



PL 375 CLAD
BY P.R.L GLASS

GLASS HEIGHT = D.L.O + 2"

3/4" CLEAR TEMPERED
GLASS
BY P.R.L GLASS

PL 375 CLAD
BY P.R.L GLASS

PRL

GLASS
SYSTEMS
INC.

Prlglass.com



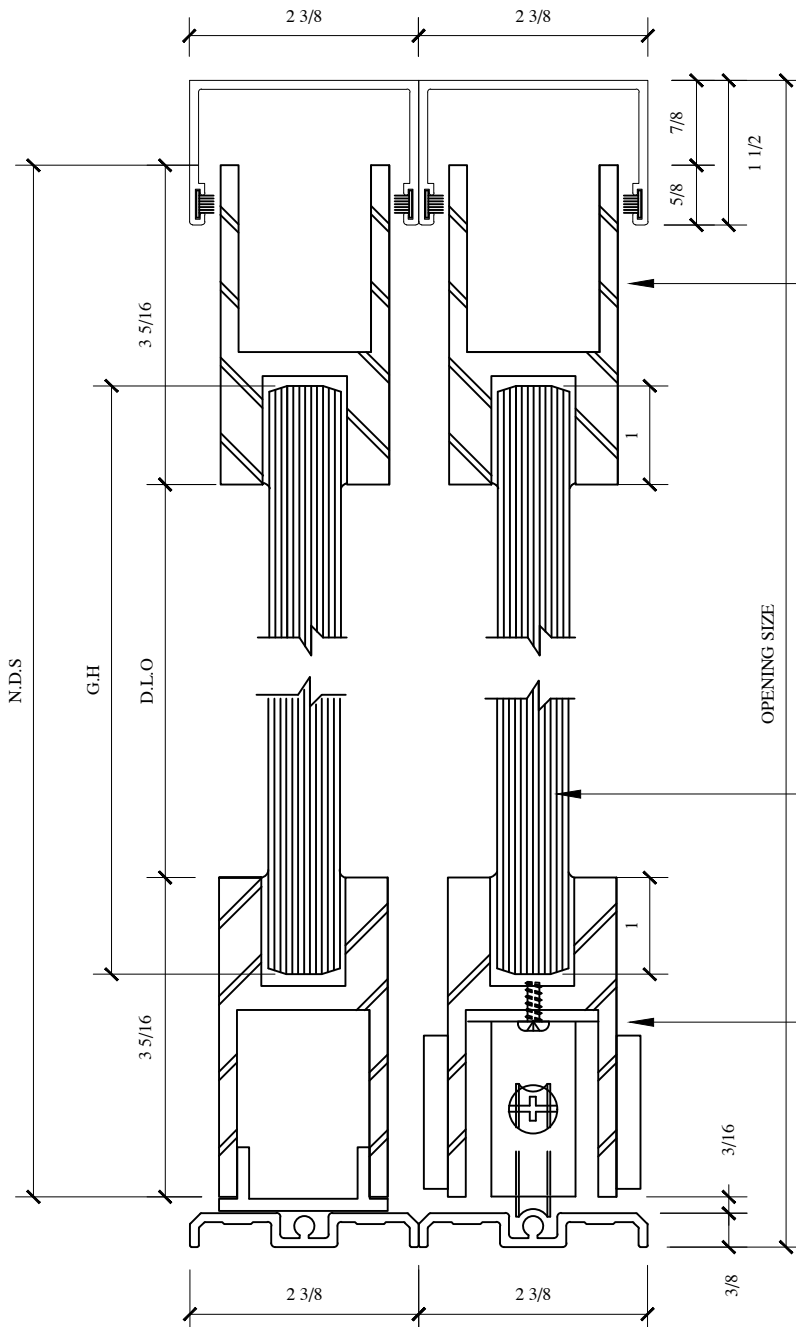
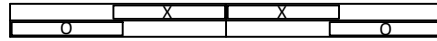
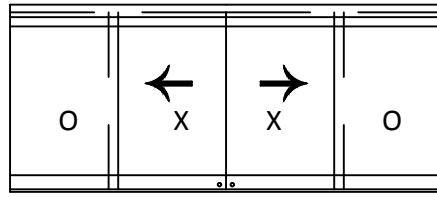
PL375

BTM ROLL SYSTEM (O,X,X,O)

DWG NO.: BOTTOM ROLLING SLIDER

DATE: 05/22/10

* FINISHES AVAILABLE :
8 POLISHED & # 4 SATIN
STAINLESS
US3 POLISHED & US4 SATIN
BRASS (NON LACQUER
COATED)
US10B
ANODIZED PAINTED



PL 375
BY P.R.L GLASS

GLASS HEIGHT = D.L.O + 2"

3/4" CLEAR TEMPERED
GLASS
BY P.R.L GLASS

PL 375
BY P.R.L GLASS

PRL

GLASS
SYSTEMS
INC.

Prlglass.com

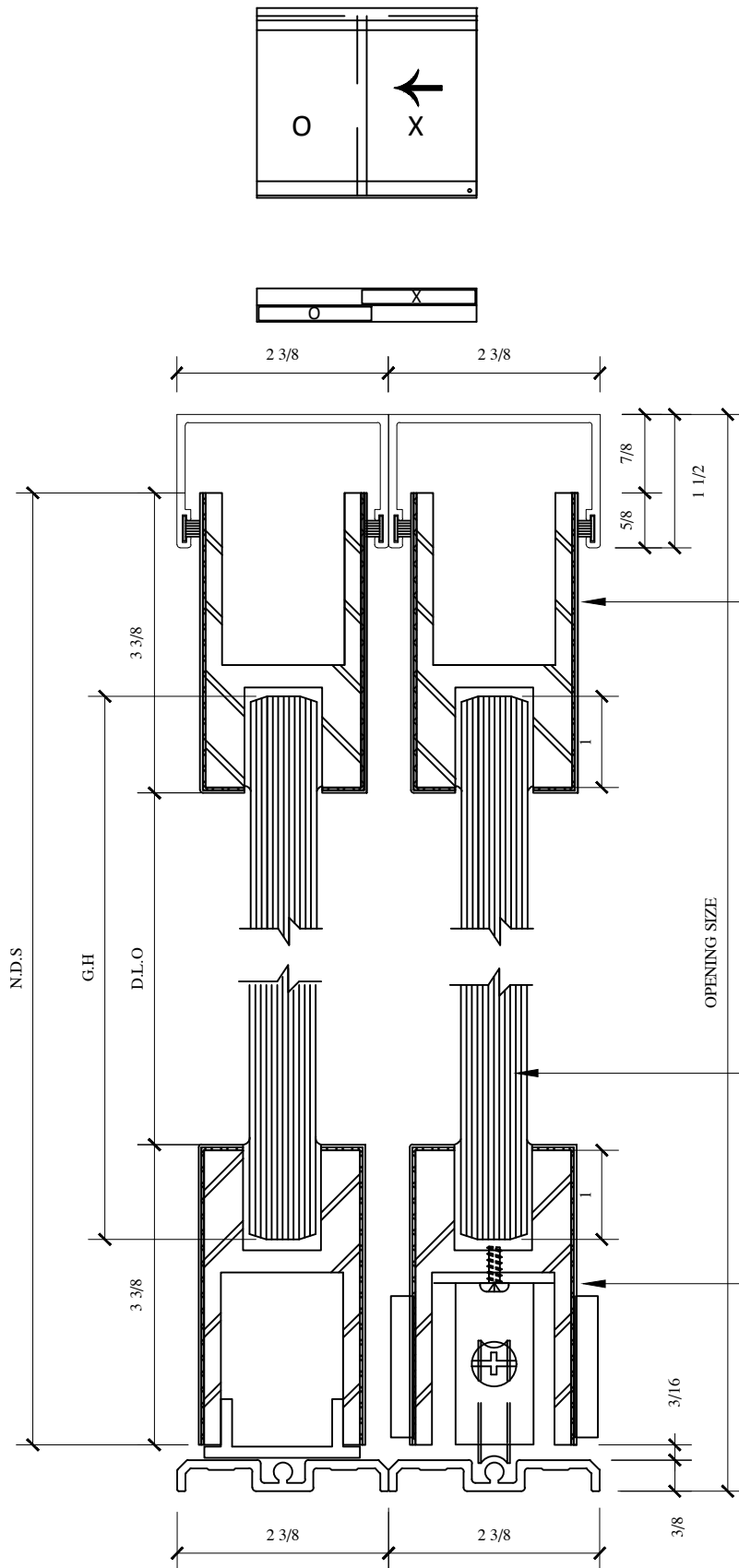


PL375 CLAD BTM ROLL SYSTEM (O,X)

DWG NO.: BOTTOM ROLLING SLIDER

DATE: 05/22/10

* FINISHES AVAILABLE :
8 POLISHED & # 4 SATIN
STAINLESS
US3 POLISHED & US4 SATIN
BRASS (NON LACQUER
COATED)
US10B
ANODIZED PAINTED



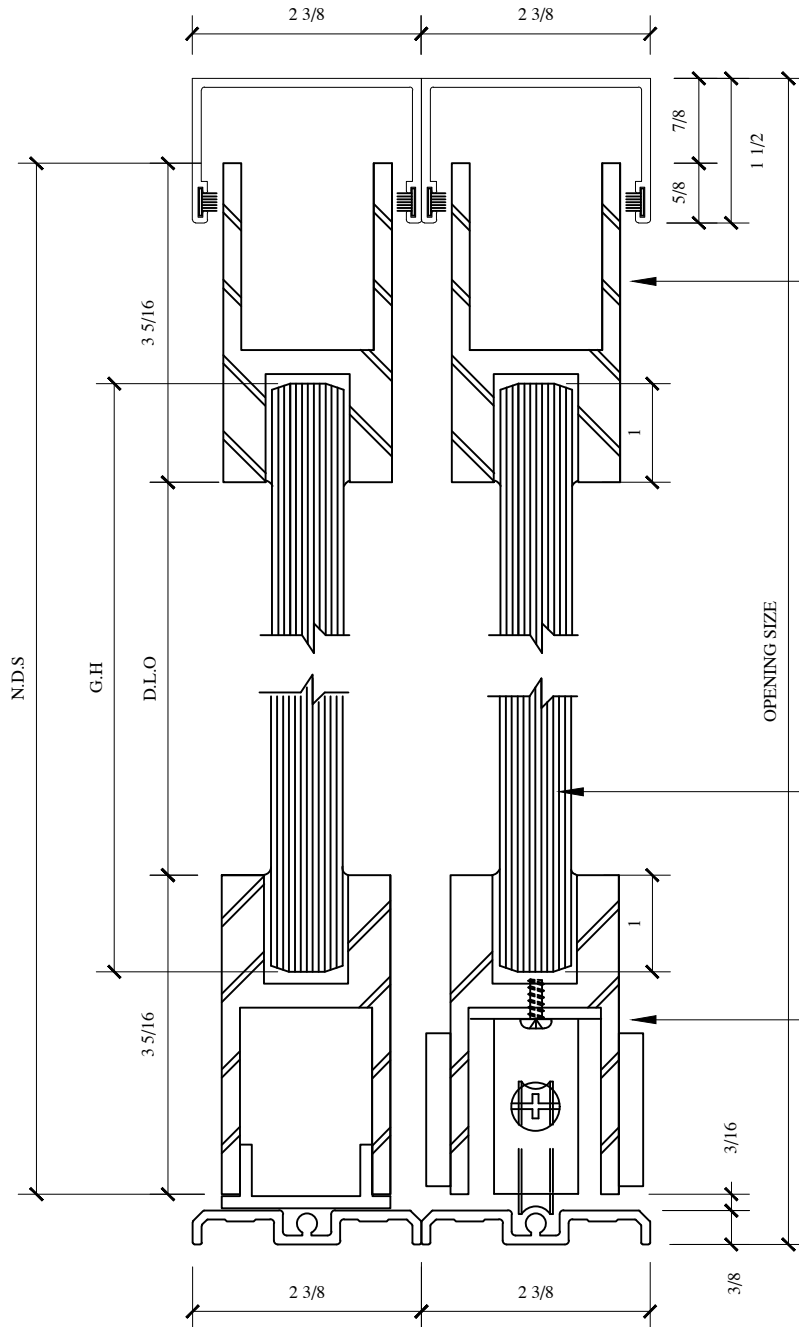
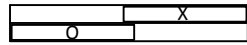
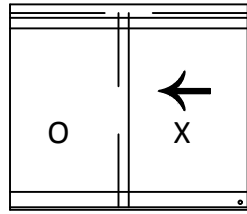
PL 375 CLAD
BY P.R.L GLASS

GLASS HEIGHT = D.L.O + 2"

3/4" CLEAR TEMPERED
GLASS
BY P.R.L GLASS

PL 375 CLAD
BY P.R.L GLASS

* FINISHES AVAILABLE :
8 POLISHED & # 4 SATIN
STAINLESS
US3 POLISHED & US4 SATIN
BRASS (NON LACQUER
COATED)
US10B
ANODIZED PAINTED

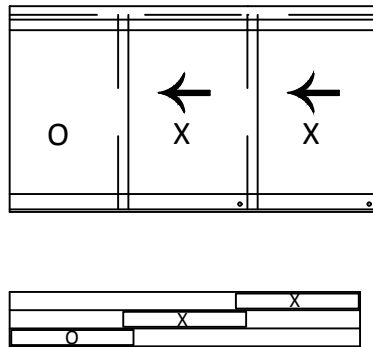


PL 375
BY P.R.L GLASS

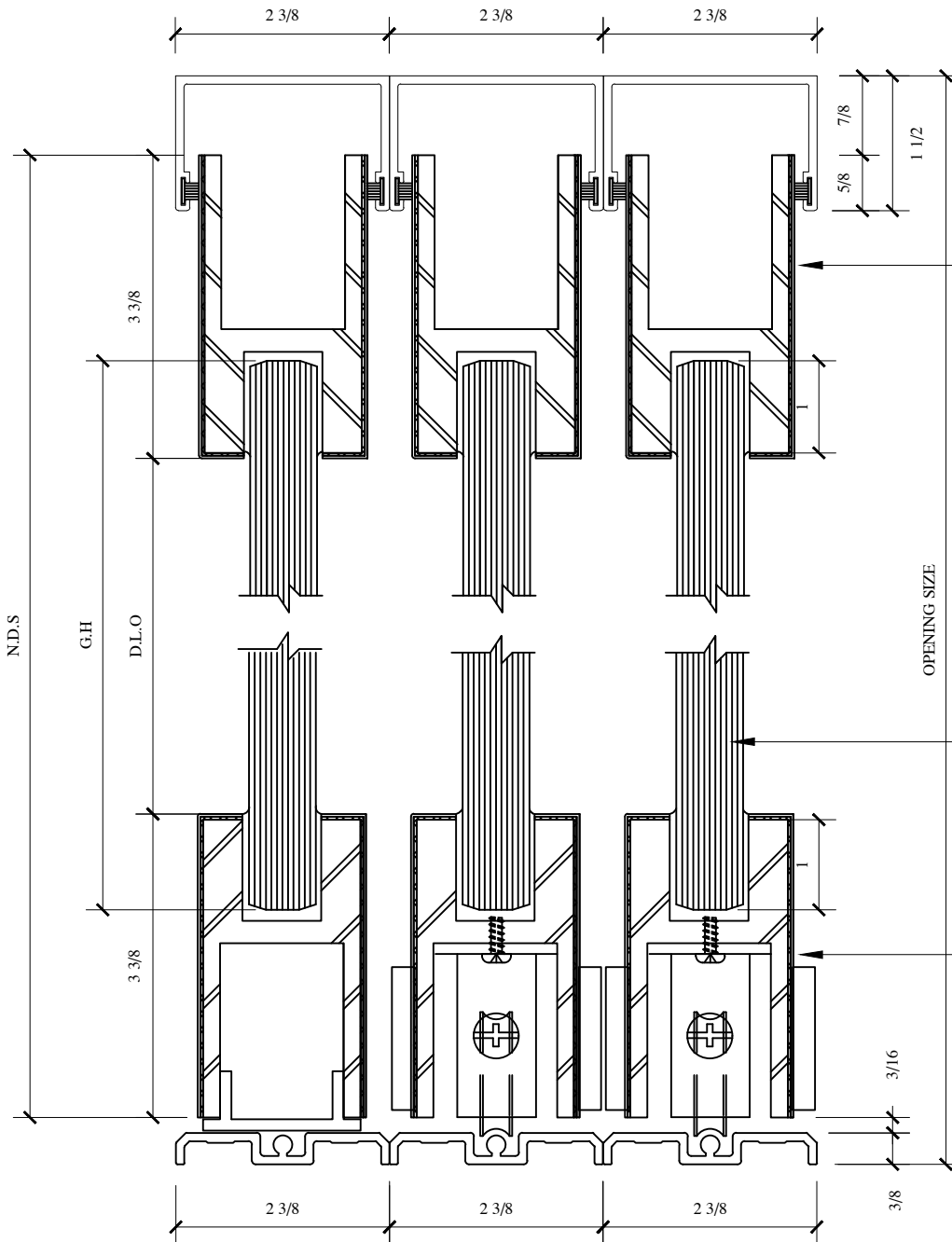
GLASS HEIGHT = D.L.O + 2"

3/4" CLEAR TEMPERED
GLASS
BY P.R.L GLASS

PL 375
BY P.R.L GLASS



* FINISHES AVAILABLE :
8 POLISHED & # 4 SATIN
STAINLESS
US3 POLISHED & US4 SATIN
BRASS (NON LACQUER
COATED)
US10B
ANODIZED PAINTED



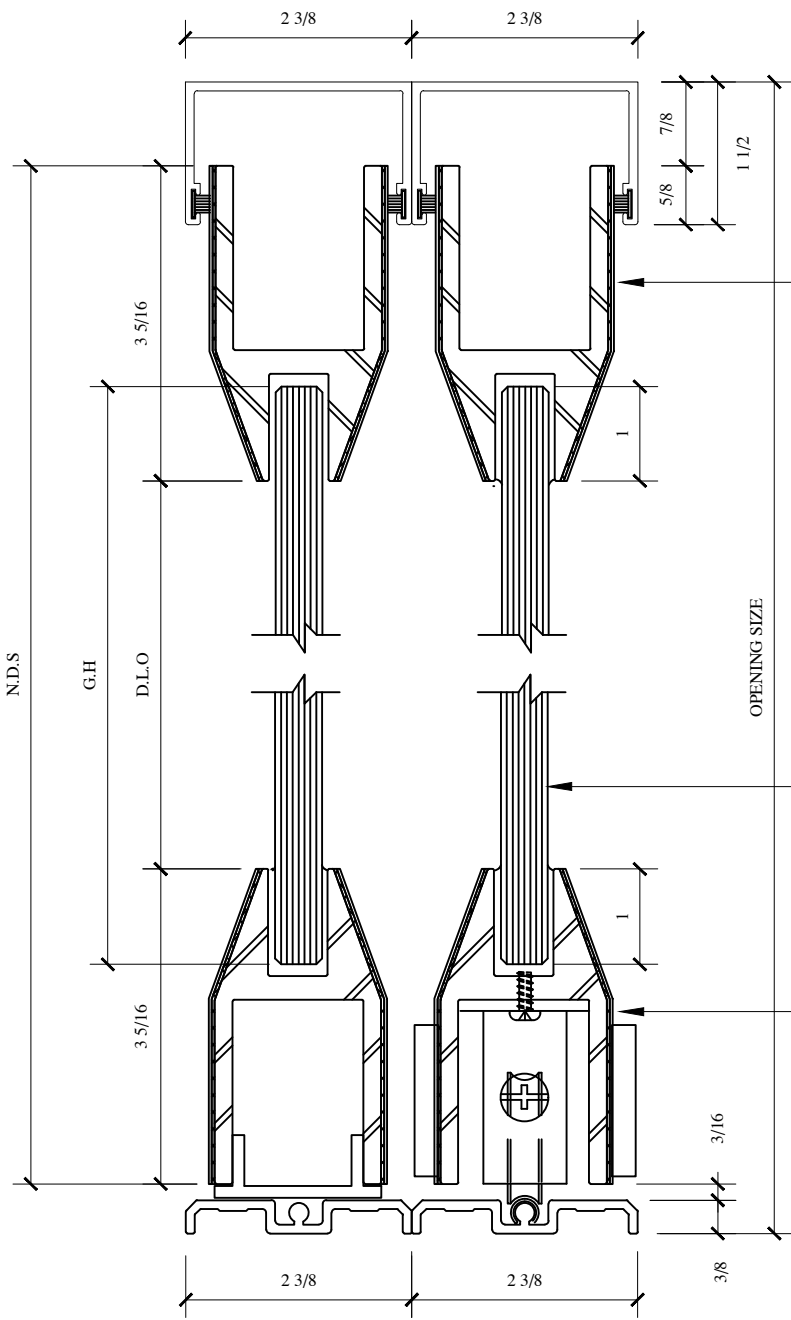
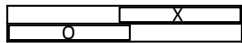
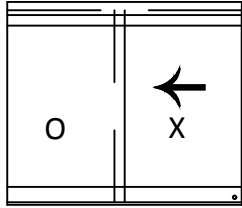
PL 375 CLAD
BY P.R.L GLASS

GLASS HEIGHT = D.L.O + 2"

3/4" CLEAR TEMPERED
GLASS
BY P.R.L GLASS

PL 375 CLAD
BY P.R.L GLASS

* FINISHES AVAILABLE :
8 POLISHED & # 4 SATIN STAINLESS
US3 POLISHED & US4 SATIN BRASS (NON LACQUER COATED)
US10B ANODIZED PAINTED

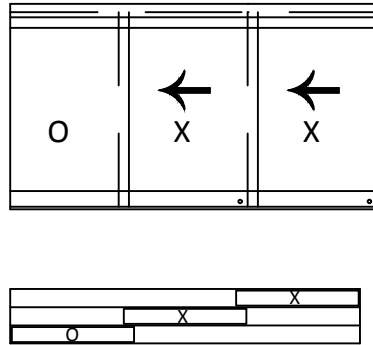


PL150 CLAD
BY P.R.L GLASS

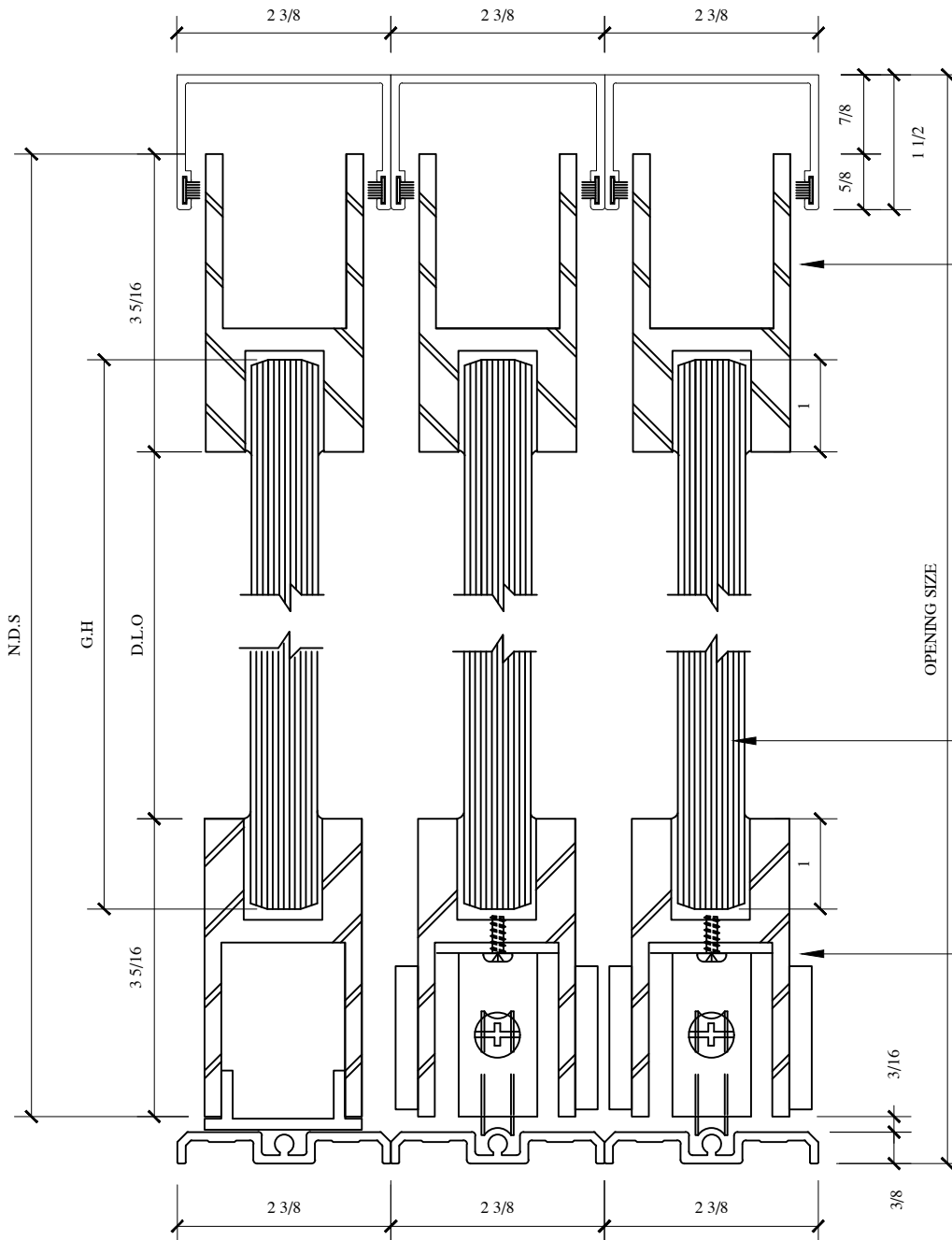
GLASS HEIGHT = D.L.O + 2"

1/2" CLEAR TEMPERED
GLASS
BY P.R.L GLASS

PL 150 CLAD
BY P.R.L GLASS



* FINISHES AVAILABLE :
8 POLISHED & # 4 SATIN STAINLESS
US3 POLISHED & US4 SATIN BRASS (NON LACQUER COATED)
US10B
ANODIZED PAINTED

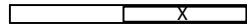
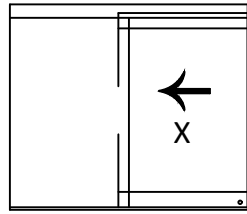


PL 375
BY P.R.L GLASS

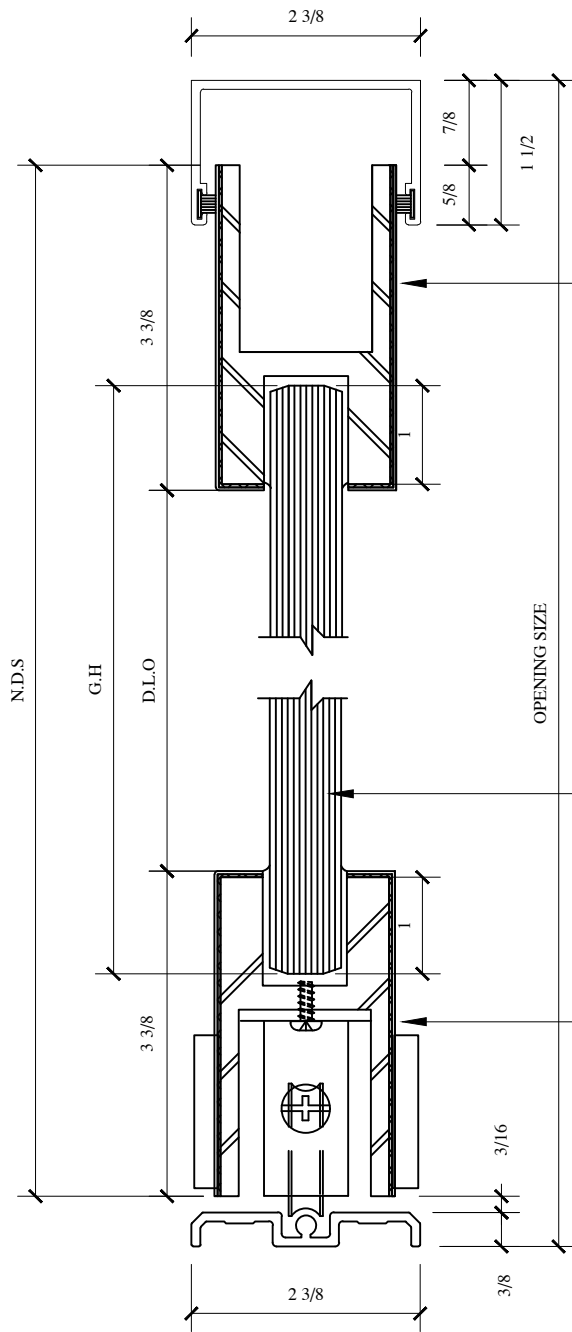
GLASS HEIGHT = D.L.O + 2"

3/4" CLEAR TEMPERED
GLASS
BY P.R.L GLASS

PL 375
BY P.R.L GLASS



* FINISHES AVAILABLE :
8 POLISHED & # 4 SATIN
STAINLESS
US3 POLISHED & US4 SATIN
BRASS (NON LACQUER
COATED)
US10B
ANODIZED PAINTED



PL 375 CLAD
BY P.R.L GLASS

GLASS HEIGHT = D.L.O + 2"

3/4" CLEAR TEMPERED
GLASS
BY P.R.L GLASS

PL 375 CLAD
BY P.R.L GLASS

PRL

GLASS
SYSTEMS
INC.

Prlglass.com

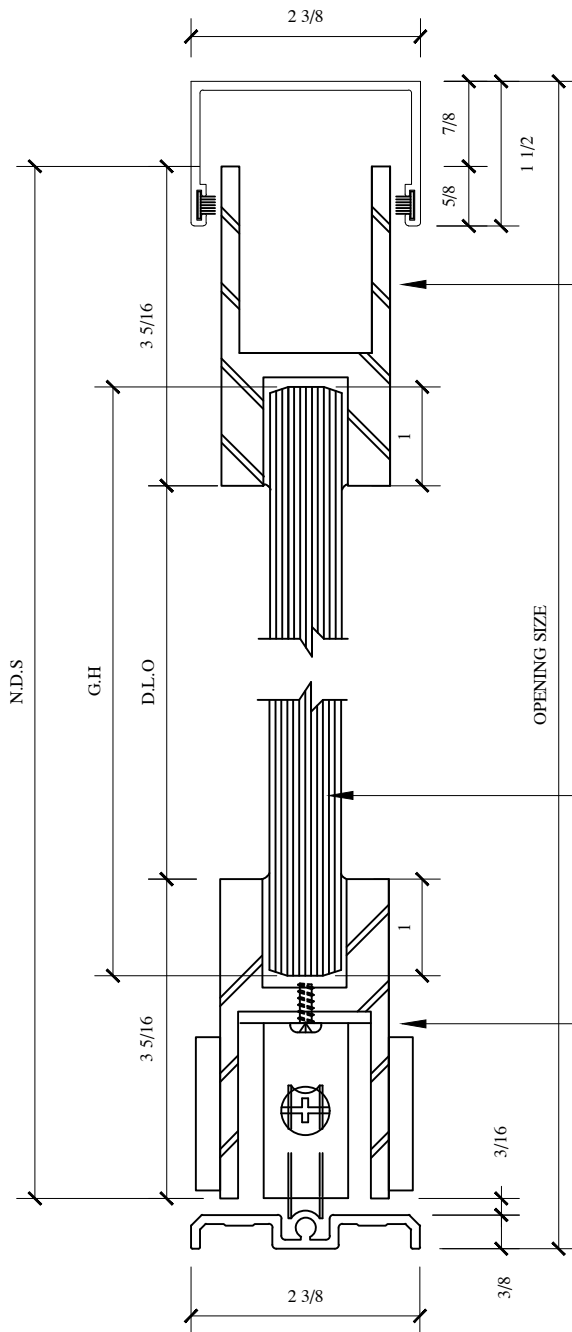
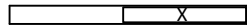
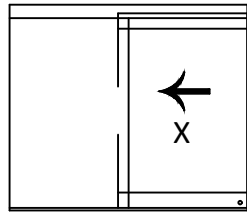


PL375 BTM ROLL SYSTEM (X)

DWG NO.: BOTTOM ROLLING SLIDER

DATE: 05/22/10

* FINISHES AVAILABLE :
8 POLISHED & # 4 SATIN
STAINLESS
US3 POLISHED & US4 SATIN
BRASS (NON LACQUER
COATED)
US10B
ANODIZED PAINTED



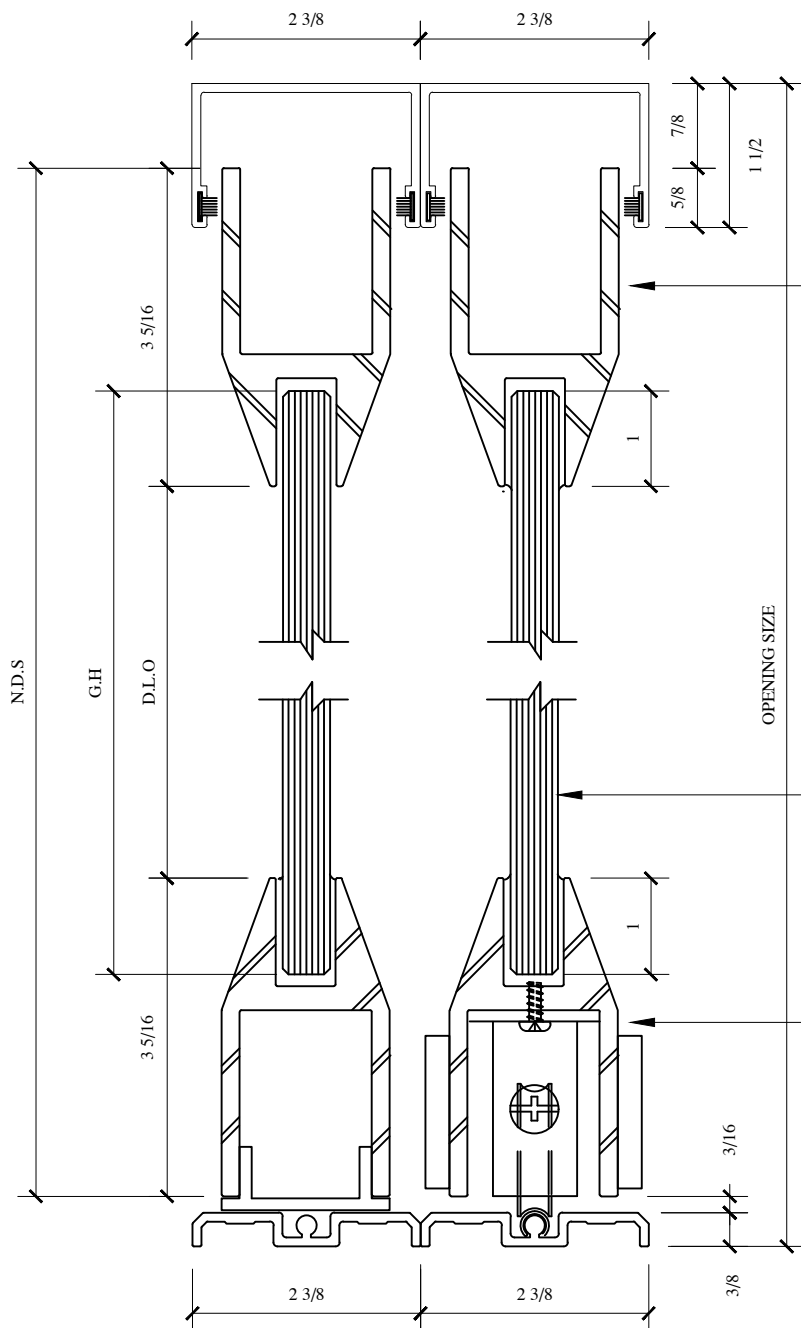
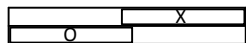
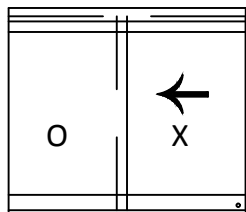
PL 375
BY P.R.L GLASS

GLASS HEIGHT = D.L.O + 2"

3/4" CLEAR TEMPERED
GLASS
BY P.R.L GLASS

PL 375
BY P.R.L GLASS

* FINISHES AVAILABLE :
8 POLISHED & # 4 SATIN
STAINLESS
US3 POLISHED & US4 SATIN
BRASS (NON LACQUER
COATED)
US10B
ANODIZED PAINTED

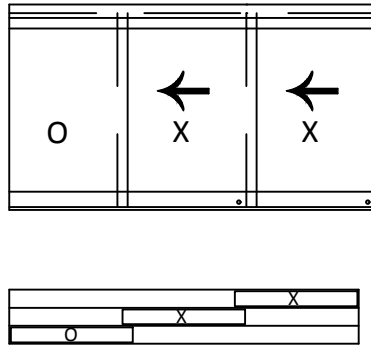


PL 150
BY P.R.L GLASS

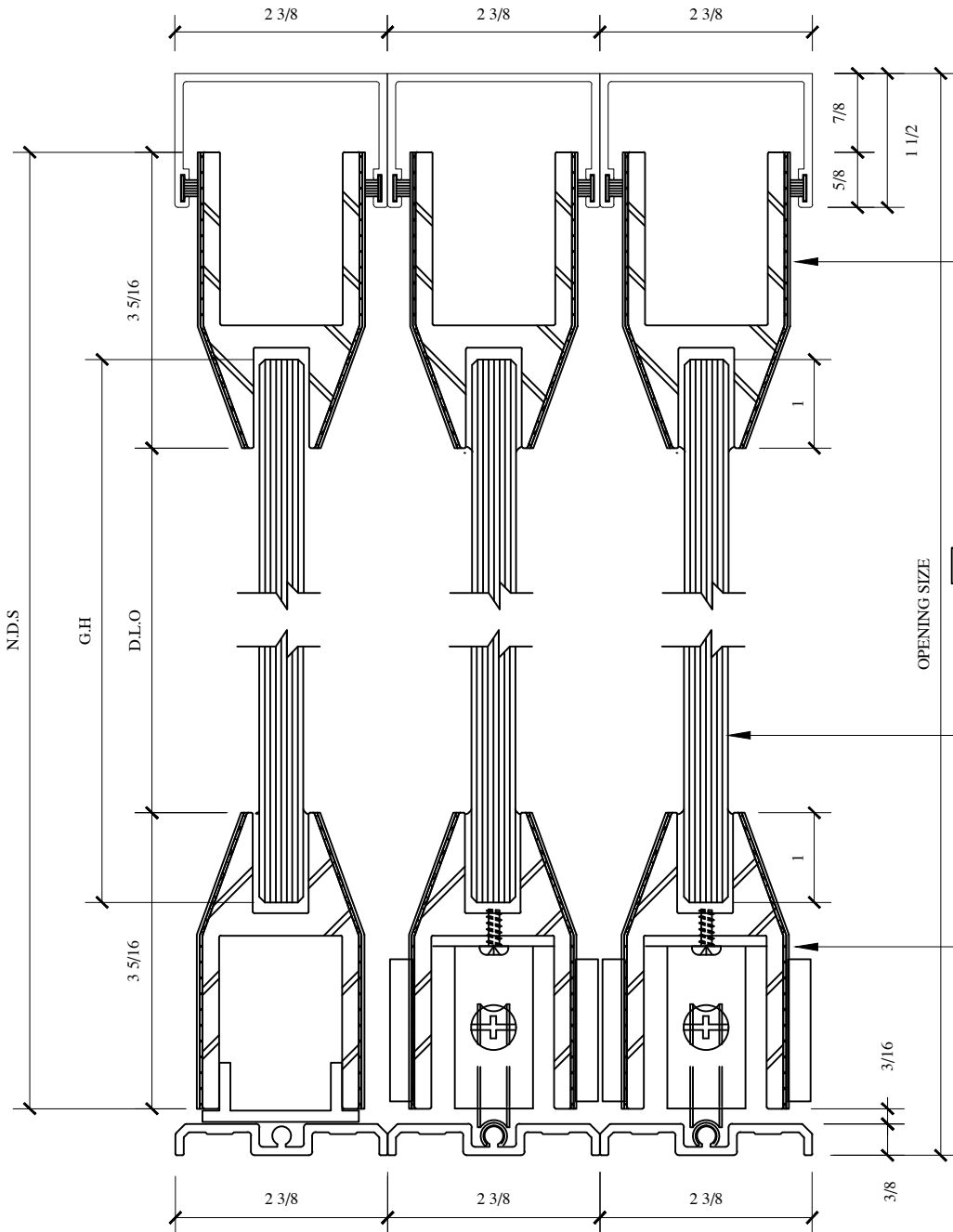
GLASS HEIGHT = D.L.O + 2"

1/2" CLEAR TEMPERED
GLASS
BY P.R.L GLASS

PL 150
BY P.R.L GLASS



* FINISHES AVAILABLE :
8 POLISHED & # 4 SATIN STAINLESS
US3 POLISHED & US4 SATIN BRASS (NON LACQUER COATED)
US10B
ANODIZED PAINTED

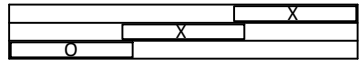
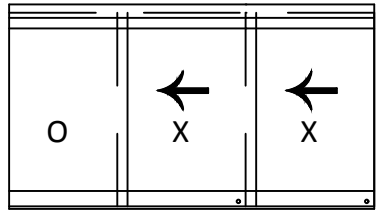


PL150 CLAD
BY P.R.L GLASS

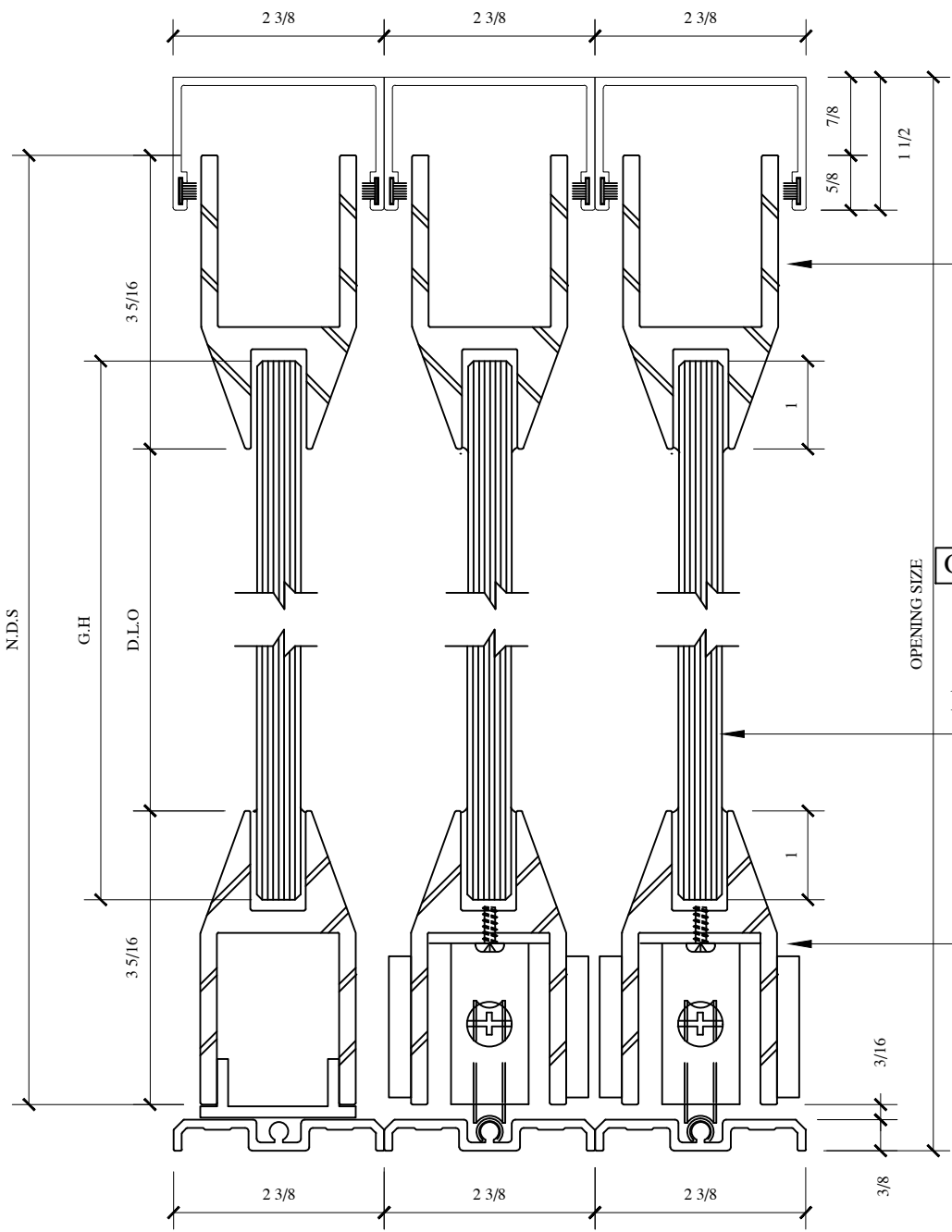
GLASS HEIGHT = D.L.O + 2"

1/2" CLEAR TEMPERED
GLASS
BY P.R.L GLASS

PL 150 CLAD
BY P.R.L GLASS



* FINISHES AVAILABLE :
8 POLISHED & # 4 SATIN
STAINLESS
US3 POLISHED & US4 SATIN
BRASS (NON LACQUER
COATED)
US10B
ANODIZED PAINTED



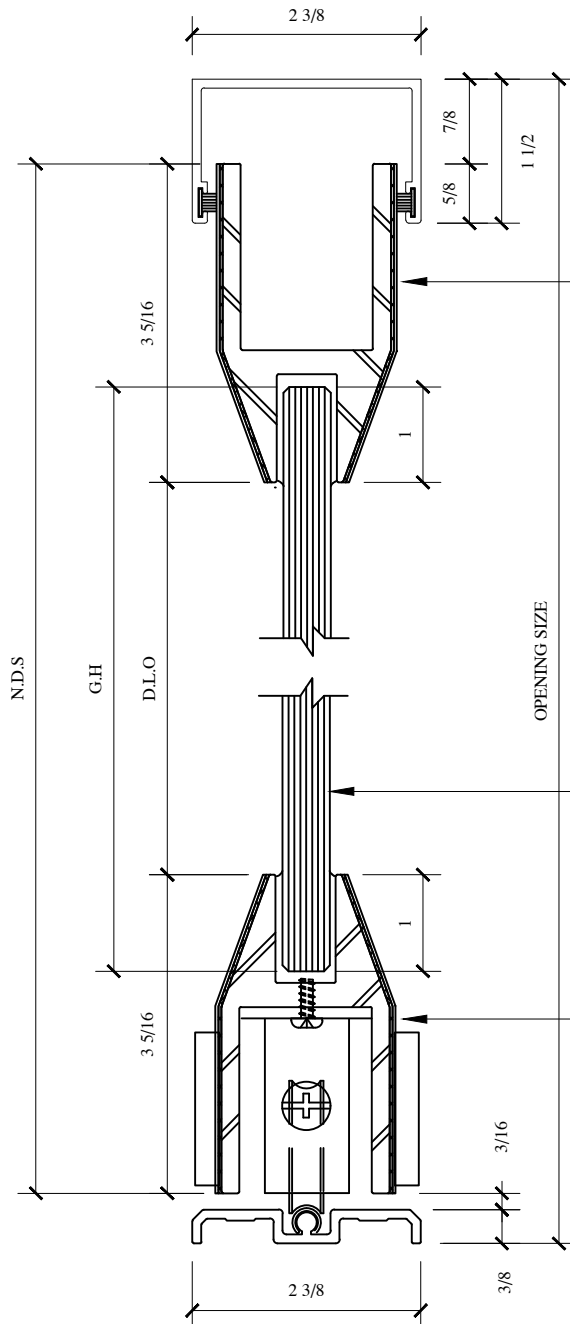
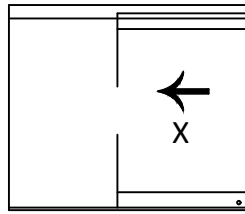
PL 150
BY P.R.L GLASS

GLASS HEIGHT = D.L.O + 2"

1/2" CLEAR TEMPERED
GLASS
BY P.R.L GLASS

PL 150
BY P.R.L GLASS

* FINISHES AVAILABLE :
8 POLISHED & # 4 SATIN
STAINLESS
US3 POLISHED & US4 SATIN
BRASS (NON LACQUER
COATED)
US10B
ANODIZED PAINTED

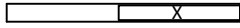
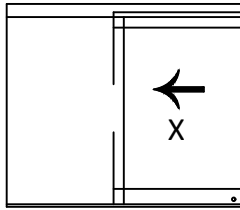


PL150 CLAD
BY P.R.L GLASS

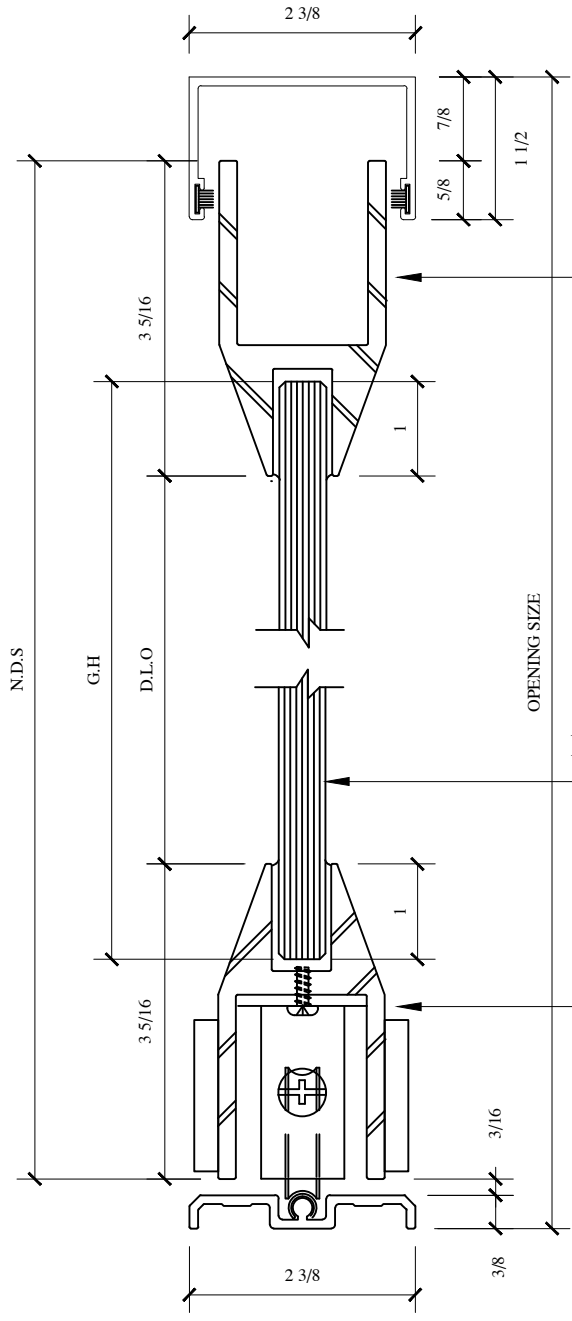
GLASS HEIGHT = D.L.O + 2"

1/2" CLEAR TEMPERED
GLASS
BY P.R.L GLASS

PL 150 CLAD
BY P.R.L GLASS



* FINISHES AVAILABLE :
8 POLISHED & # 4 SATIN STAINLESS
US3 POLISHED & US4 SATIN BRASS (NON LACQUER COATED)
US10B
ANODIZED PAINTED



PL 150
BY P.R.L GLASS

GLASS HEIGHT = D.L.O + 2"

1/2" CLEAR TEMPERED
GLASS
BY P.R.L GLASS

PL 150
BY P.R.L GLASS

PRL

GLASS
SYSTEMS
INC.
Prlglass.com

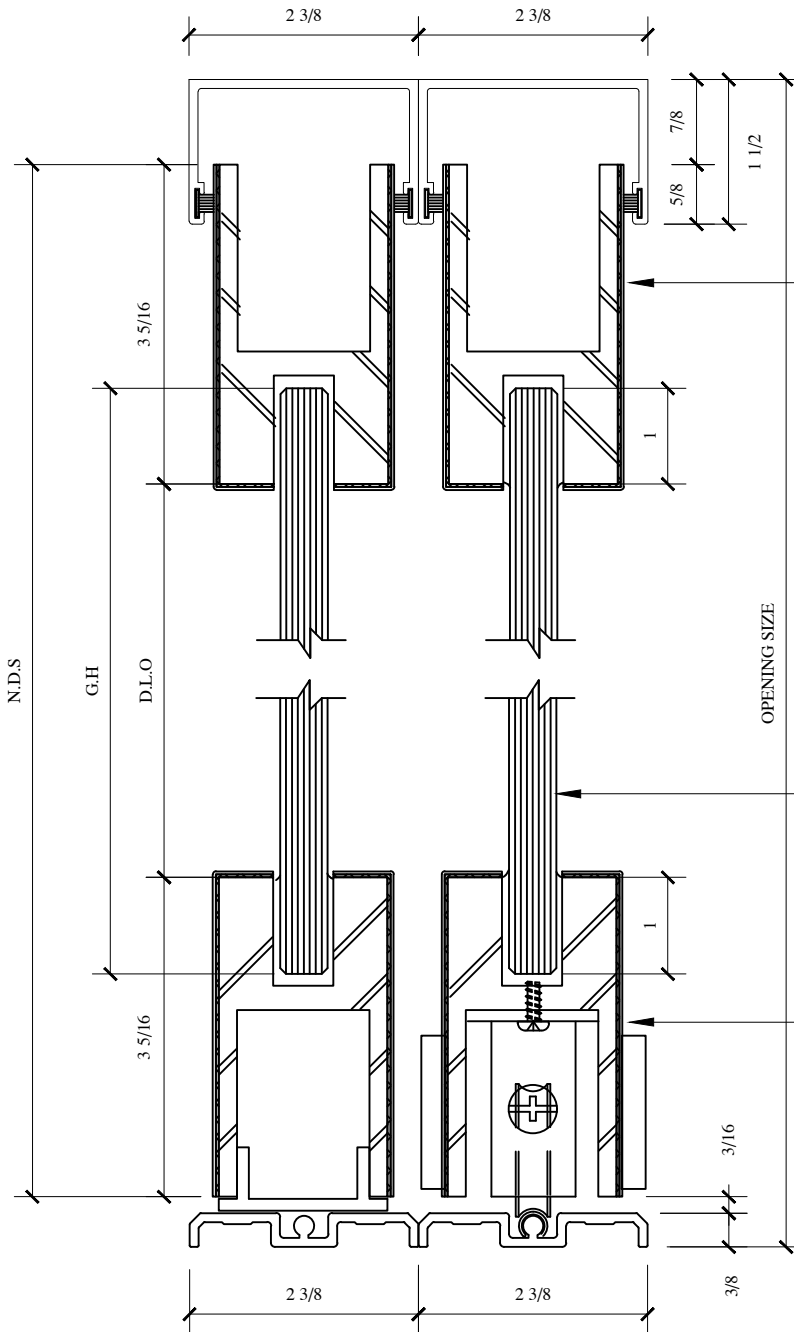
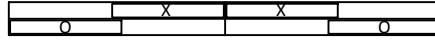
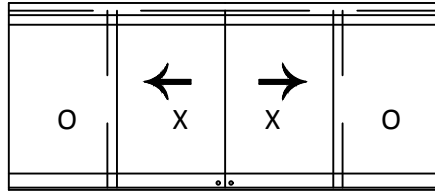


PL350 CLAD BTM ROLL SYSTEM (O,X,X,O)

DWG NO.: BOTTOM ROLLING SLIDER

DATE: 05/22/10

* FINISHES AVAILABLE :
8 POLISHED & # 4 SATIN
STAINLESS
US3 POLISHED & US4 SATIN
BRASS (NON LACQUER
COATED)
US10B
ANODIZED PAINTED



PL 350 CLAD
BY P.R.L GLASS

GLASS HEIGHT = D.L.O + 2"

1/2" CLEAR TEMPERED
GLASS
BY P.R.L GLASS

PL 350 CLAD
BY P.R.L GLASS



LLO2M

